



NATURAL
ENGLAND



Inspiring and Enabling Local Communities: an Integrated Local Delivery (IDL) framework

Jenny Phelps Gloucestershire FWAG
FWAG SW Associate

3 Layers of Integrated Delivery

- Integration of advice from a Government Agency with diverse roles e.g. The EA - flooding, water quality and fish habitats
- Integrated Farm Advice from DEFRA – combining all the different work of Agencies delivering EU Directives
- Integrated Local Delivery – integrating the socio economic agenda's with farming and the environment at a Parish and District Level.

Background – how was the Integrated local delivery model (ILD) developed

- Caring for the Cotswolds HLF 2002- 2007
 - 2.4 million, 5 yr project, 34 partners
- Demonstrated locally, regionally, nationally and internationally
- Further supported by FWAG and partners
- Researched and evaluated by CCRI funded by Natural England
- **Delivery model** for integrated delivery – implementing multiple strategies

Delivering sustainable management on complex multi designated sites – What was missing?

Uley Bury 2004

Partners working in silos; duplication and overlap

Local knowledge and resource undervalued and overlooked



Outline of the Delivery framework

Approach

8 key themes to the delivery framework:

- Work at lowest appropriate administrative structure;
- Clarifies statutory and non-statutory partners;
- Deliver objectives at landscape scale;
- Supports , values and respect local knowledge from the farming/local community;
- Specialist Facilitation to develop local management group;
- Structured from the Parish Council;
- Enables inclusive multi objective delivery;
- Identifies funding opportunities (RDPE), and match funding.

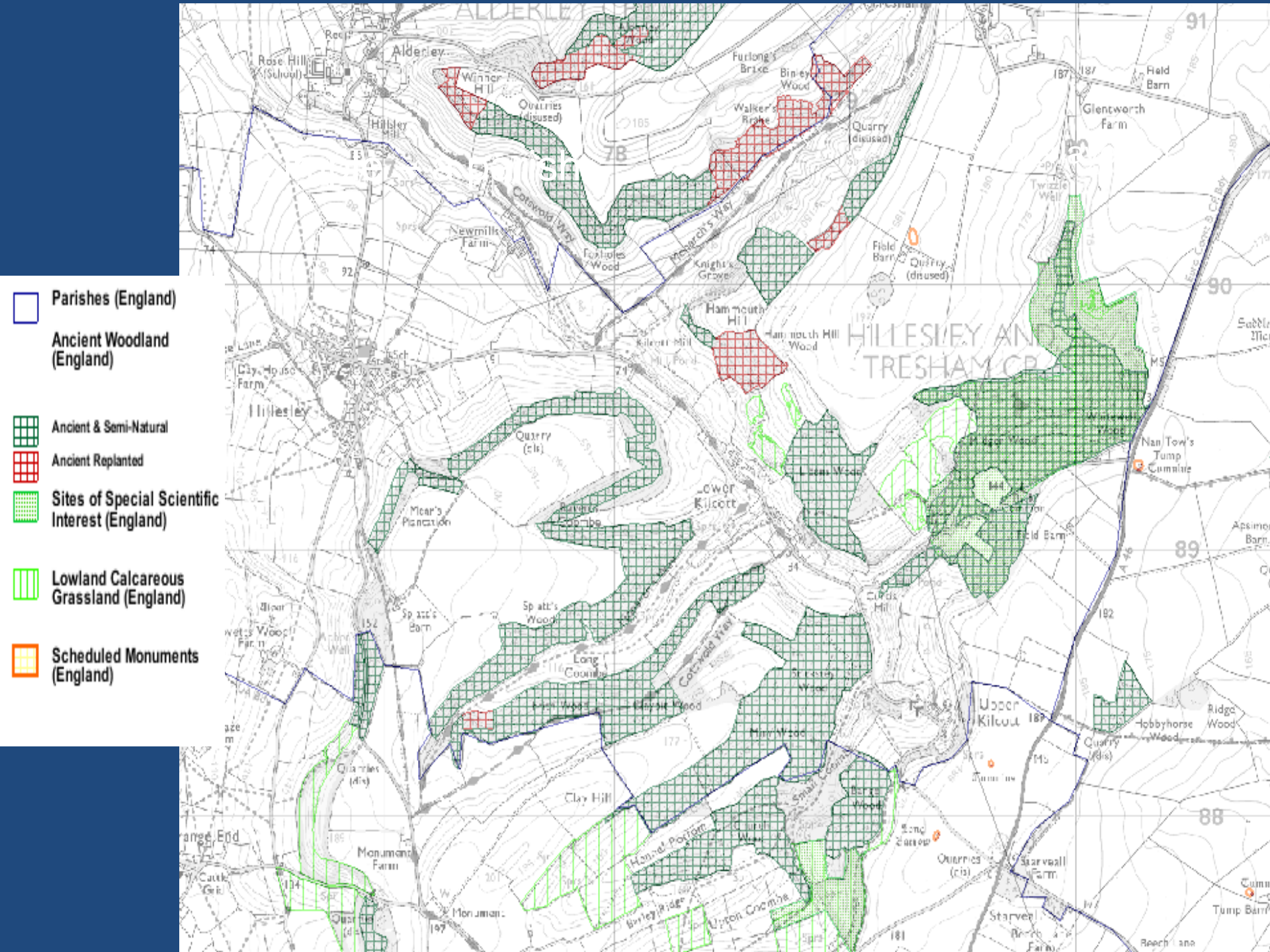
Overview of Delivery framework

- 8 key principles
- 6 stage process as core

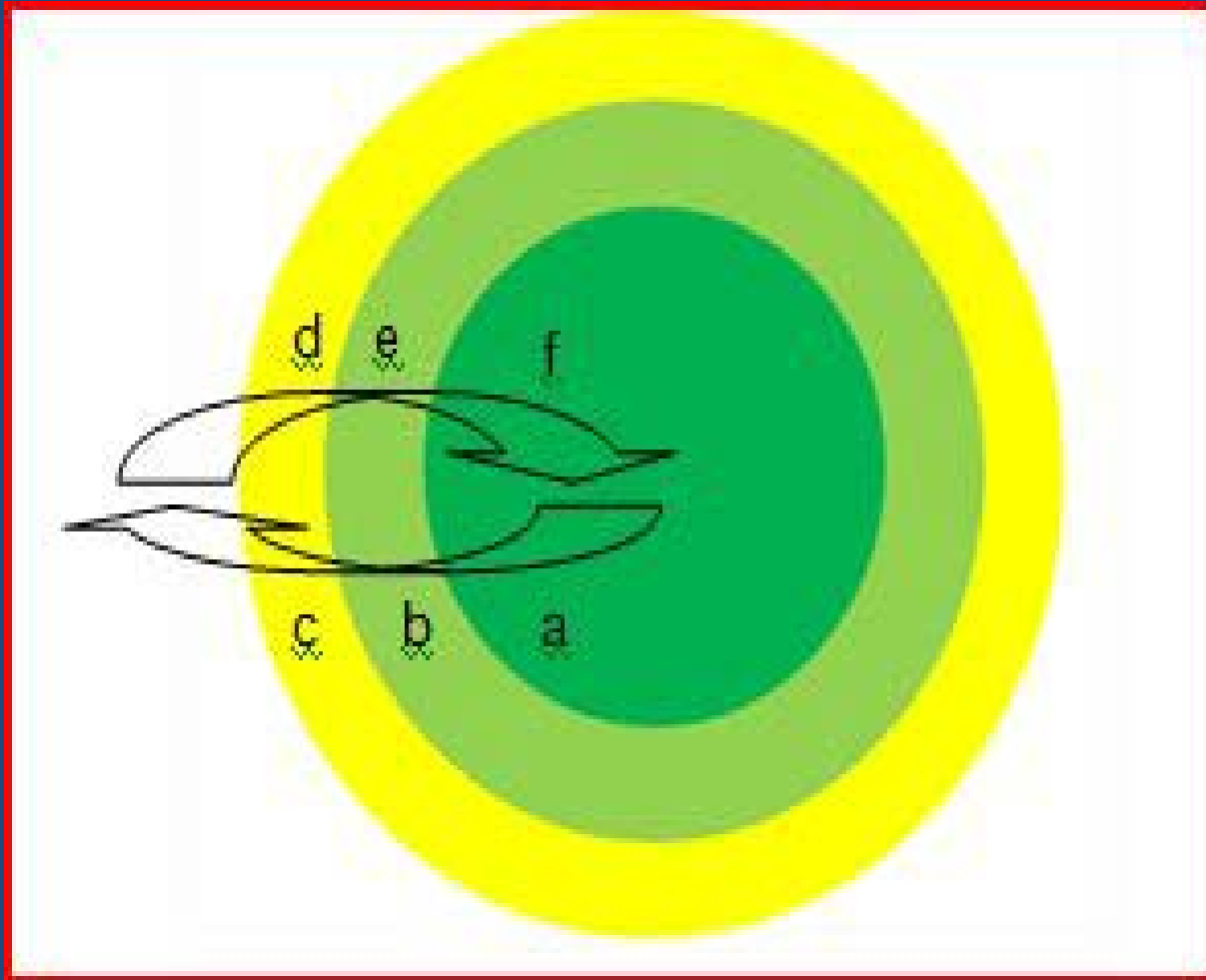
Step 1

- Once invited begin initial scoping to determine the area, individuals and statutory frameworks.





Step 1 – initial scoping

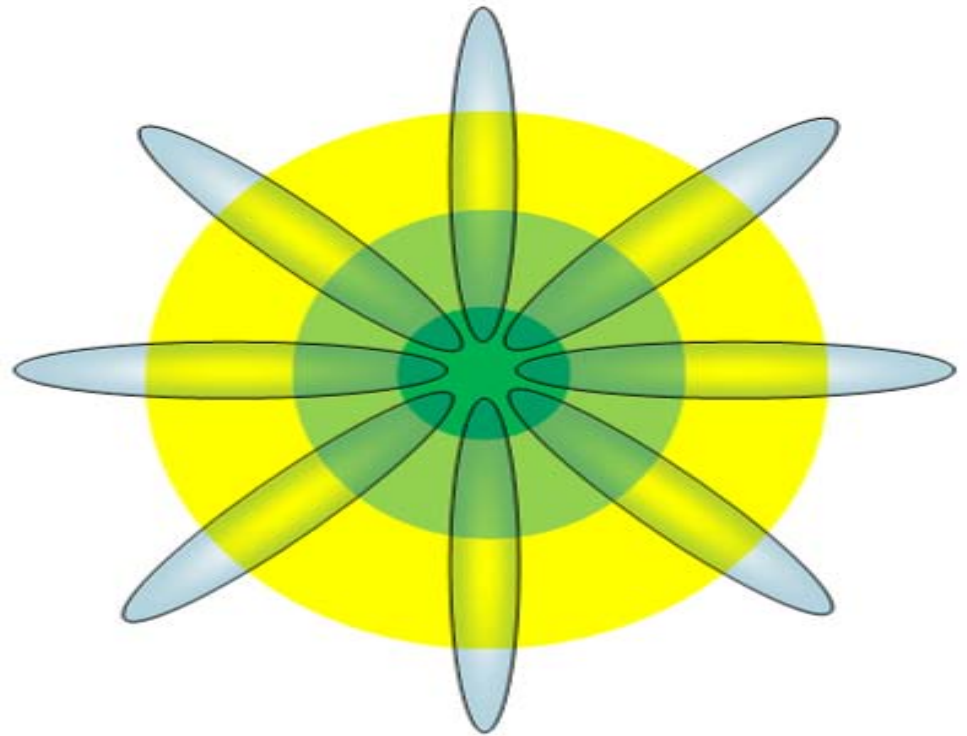


Local to
national
and back
to local.

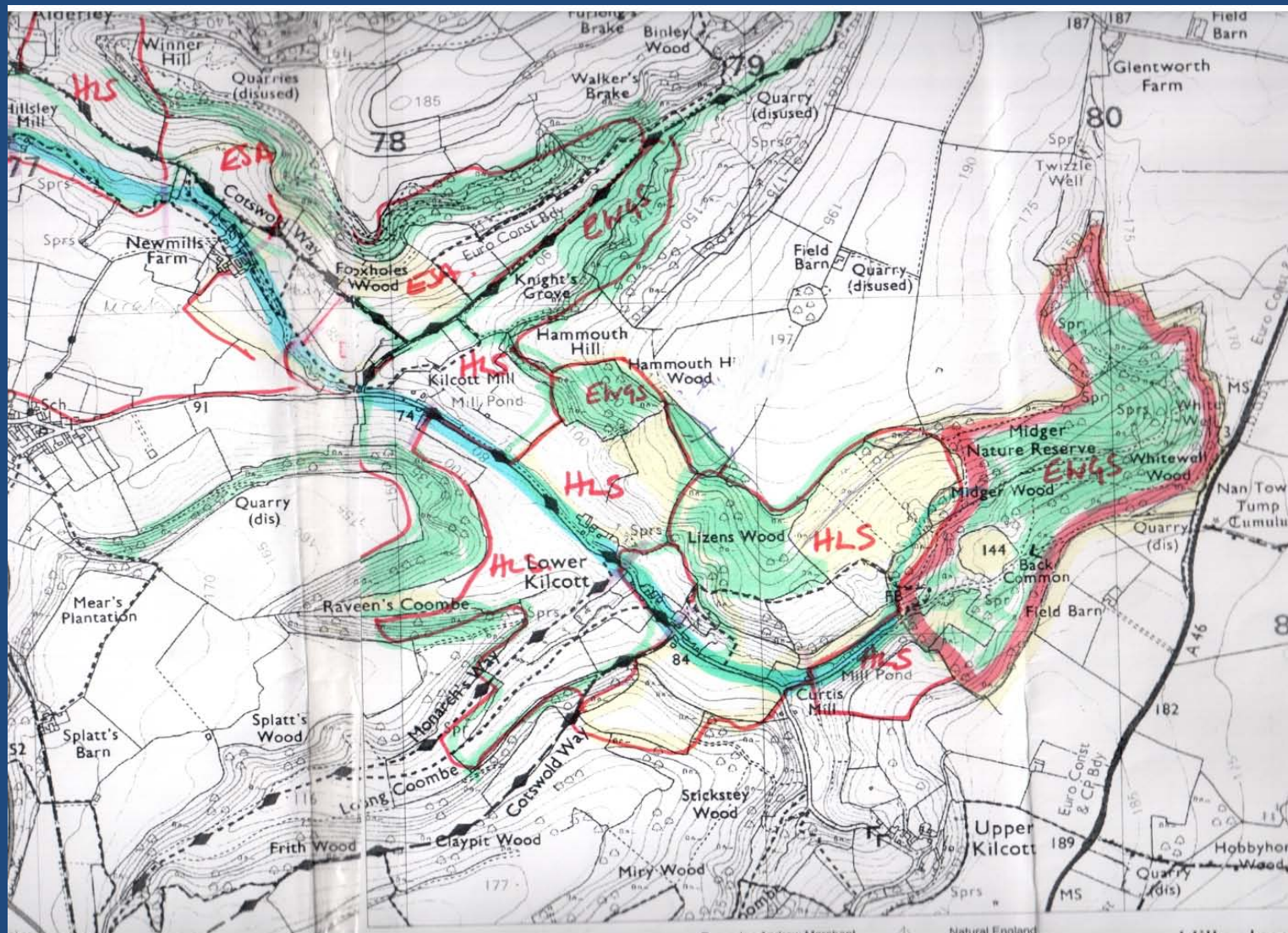
- Scoping identifies locally relevant partners

Can work together to support local delivery

ILD Flower



Partners working to deliver their own duties and objectives together



Steps 2 & 3

Step 2

- **Map the management tasks and verify these in a inclusive and open format.**

Step 3

- **Develop a management group (and email circle) around key local and statutory stakeholders**

Steps 4-6

Step 4

- **Embedding linkages and local adoption of responsibilities**

Step 5

- **Establish capacity and local management group**

Step 6

- **Implement proposals and embed management group and monitor**

A photograph of a man in a white shirt and dark trousers standing in a field of tall, golden-brown grass. He is surrounded by several brown and white cows. In the background, there is a rolling landscape with green fields, trees, and a small town or village with a prominent church spire. The text "Reconnecting cultural severance" is overlaid on the right side of the image.

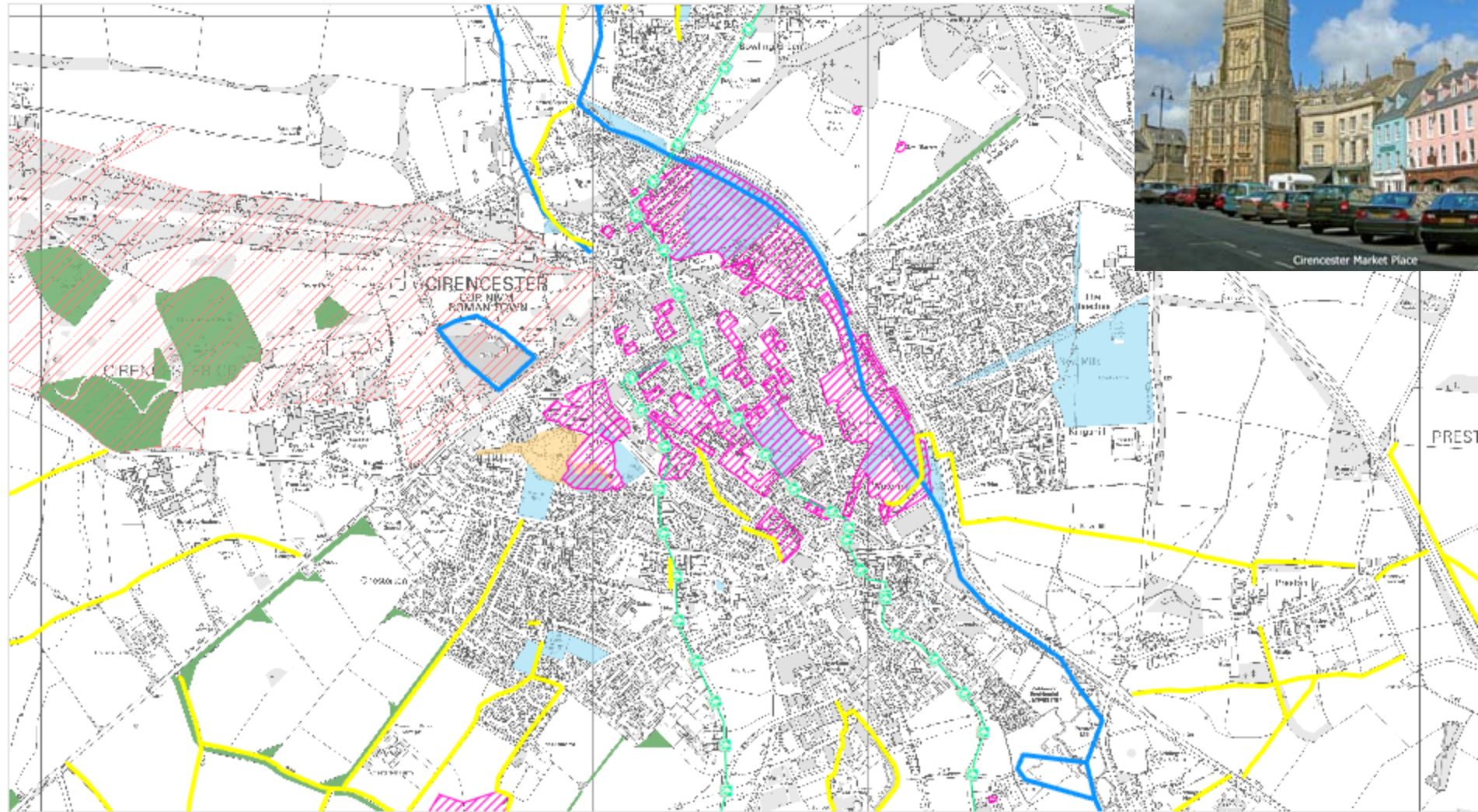
Reconnecting cultural severance

Cirencester Case Study



Cirencester Green Spaces Strategy

Green Spaces



- Rights of Way
- Public Open Space (Cirencester Town Council)
- National Cycle Route
- Hospital Grounds
- Rivers
- Accessible Woodland
- Scheduled Monuments
- Cirencester Park



0 0.25 0.5 1
Kilometres

Key points

- Connects communities & farmed environment
- Integrated multi-objective resilience planning
- Area, not issue, based focus
- Utilises existing strategic & policy frameworks
- Bespoke process but replicatable framework
- Values, respects & integrates local knowledge
- Embedding in local government administration
- Only evaluated delivery model/framework

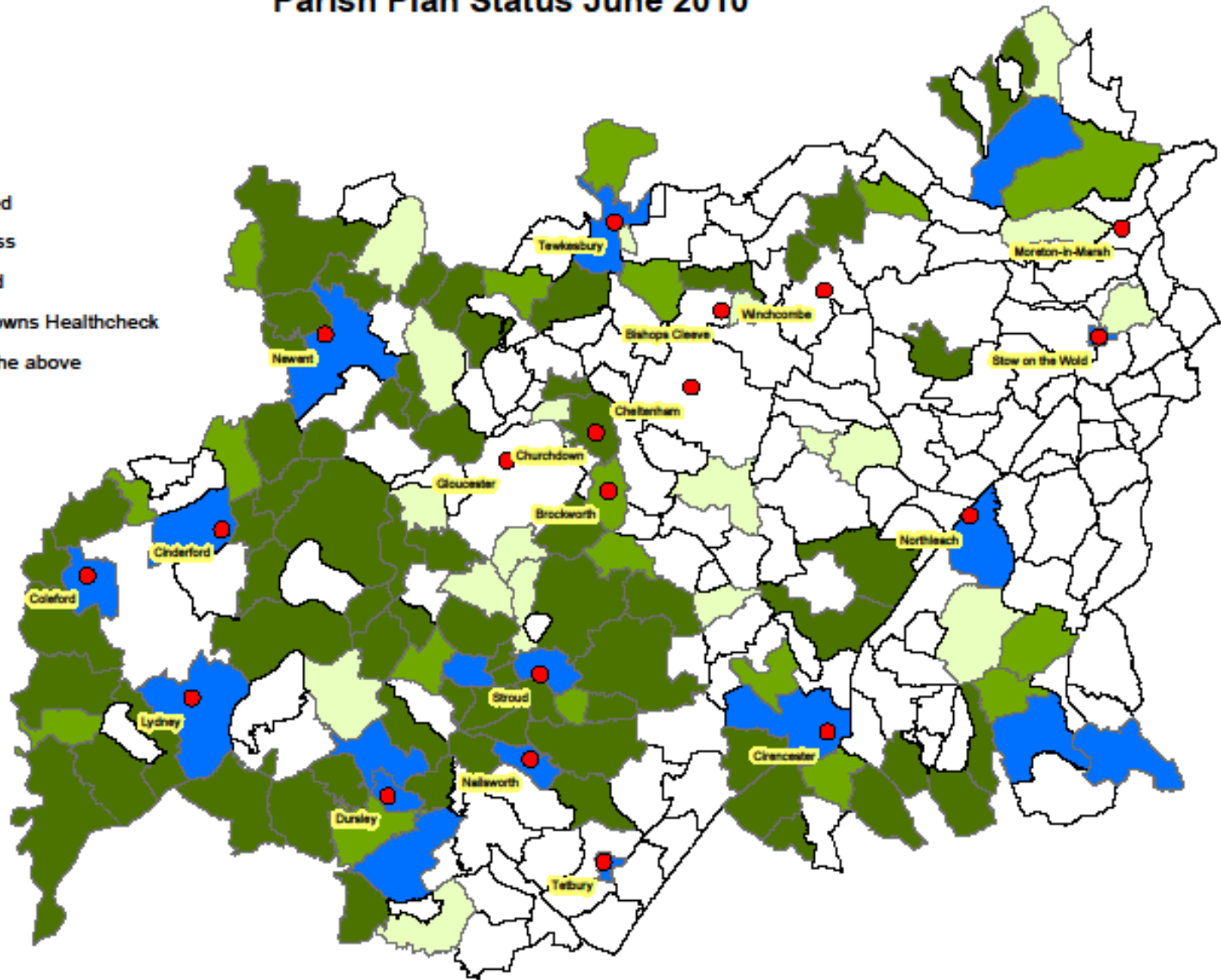


Parish Plan Status June 2010



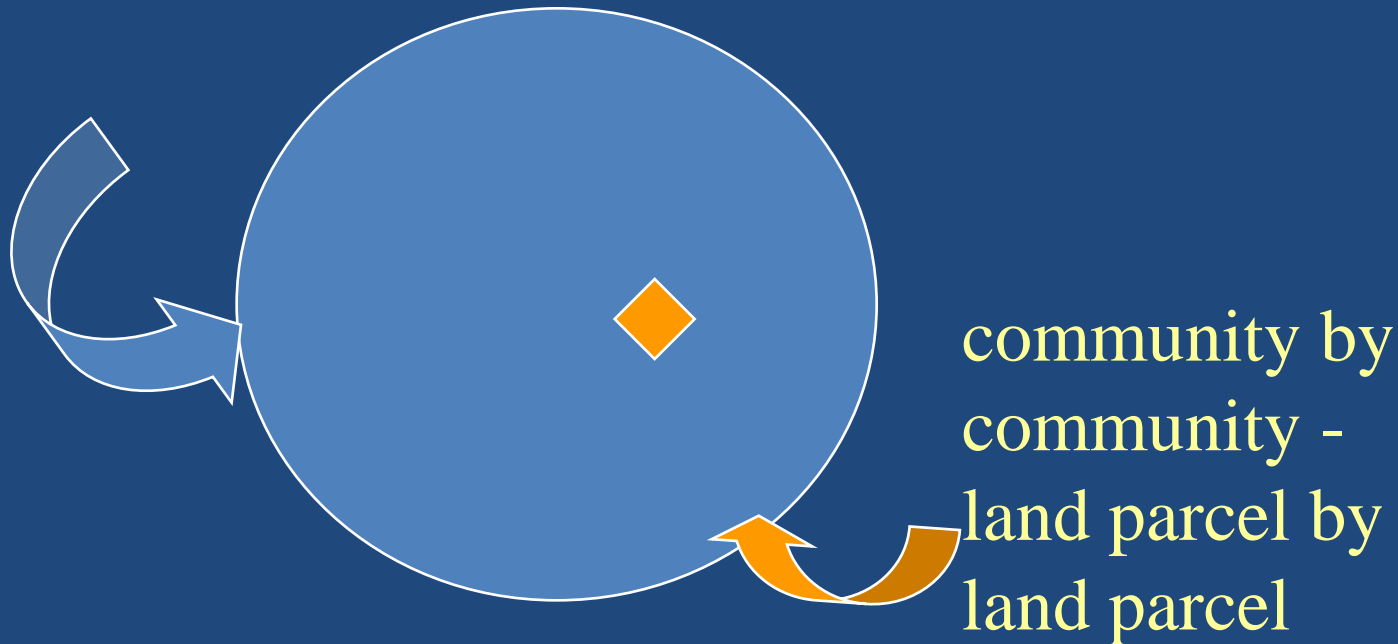
Plan Status

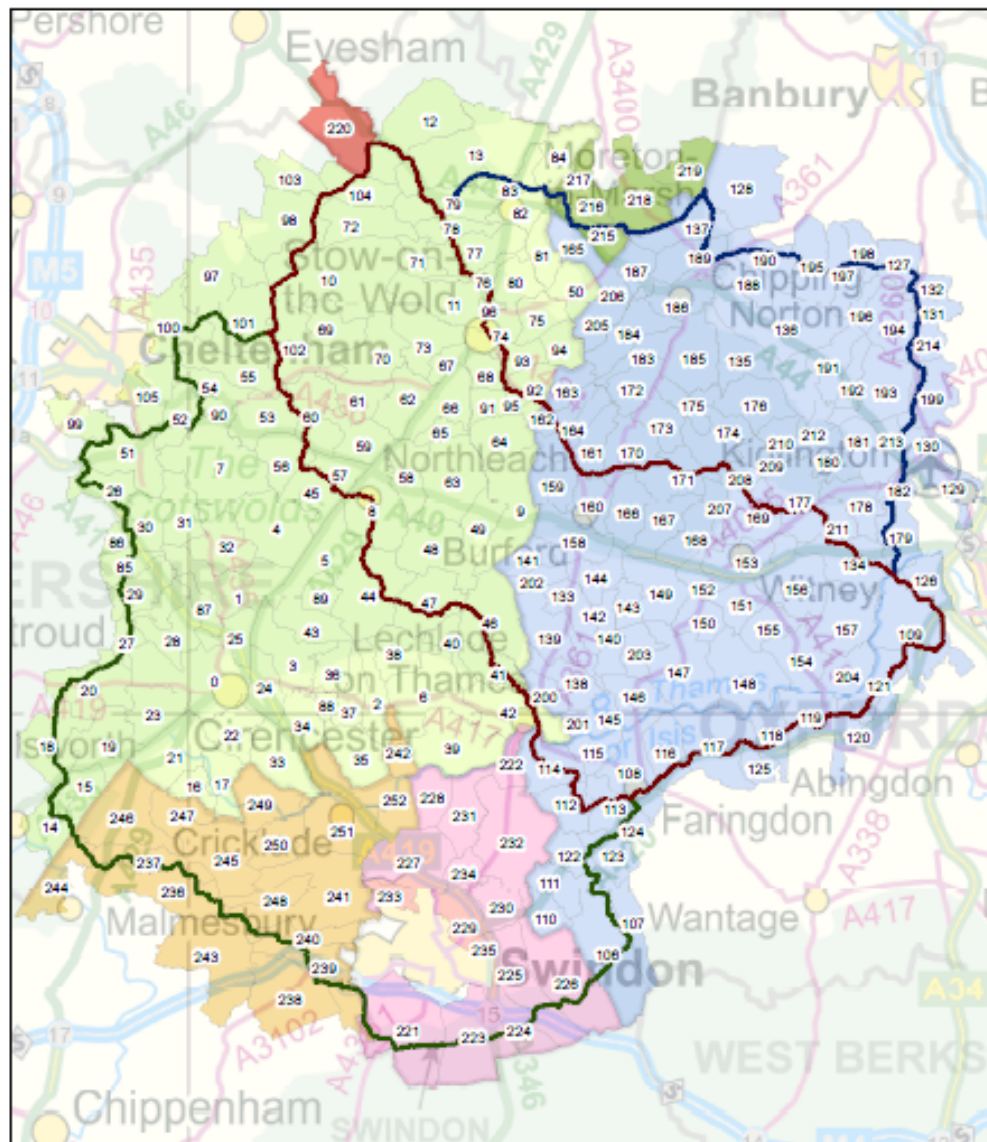
-  Completed
-  In progress
-  Interested
-  Market Towns Healthcheck
-  None of the above
-  Towns



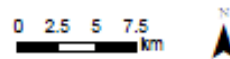
Pressing Environmental Agendas

Could ILD framework facilitate community resilience, supported by an all inclusive list partners, to achieve multi objective delivery together in each administrative parcel?





WFD Catchments	County Parishes
Swindon/Upper Thames	Gloucestershire County Parishes
Evenlode	Oxfordshire County Parishes
Windrush	Swindon Borough Parishes
	Warwickshire County Parishes



Next steps? WFD Catchment Pilot

- To role out the framework through (FIELD) Farming and Integrated Environmental Local Delivery Advisors – specialist facilitation.
- To work in support of Rural Community Councils in each parish across Gloucestershire
To provide locally relevant data sets of partners for each community - coordinator hosted by the County Council
- To sign post to all partners to achieve integrated delivery on the ground?