

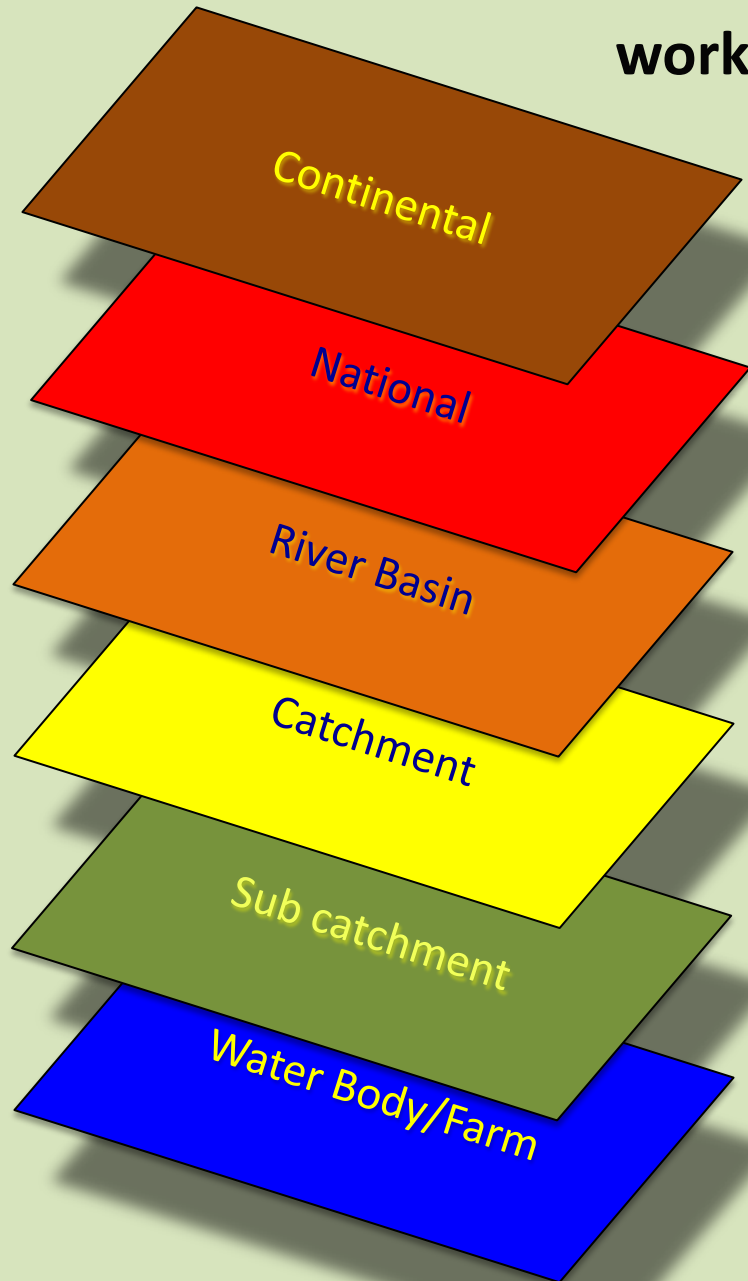


**Contrasting experiences
at different scales:
*community-led farmer groups
and nested catchment planning***

Bob Harris

*University of Sheffield
DTC Secretariat, Defra*

We must appreciate which scale we're working at, for what purpose and connect between them



Overarching objectives

National policy & co-ordination, guidance

River Basin Planning requirement

Landscape and local authority connection

Collaborative action scale

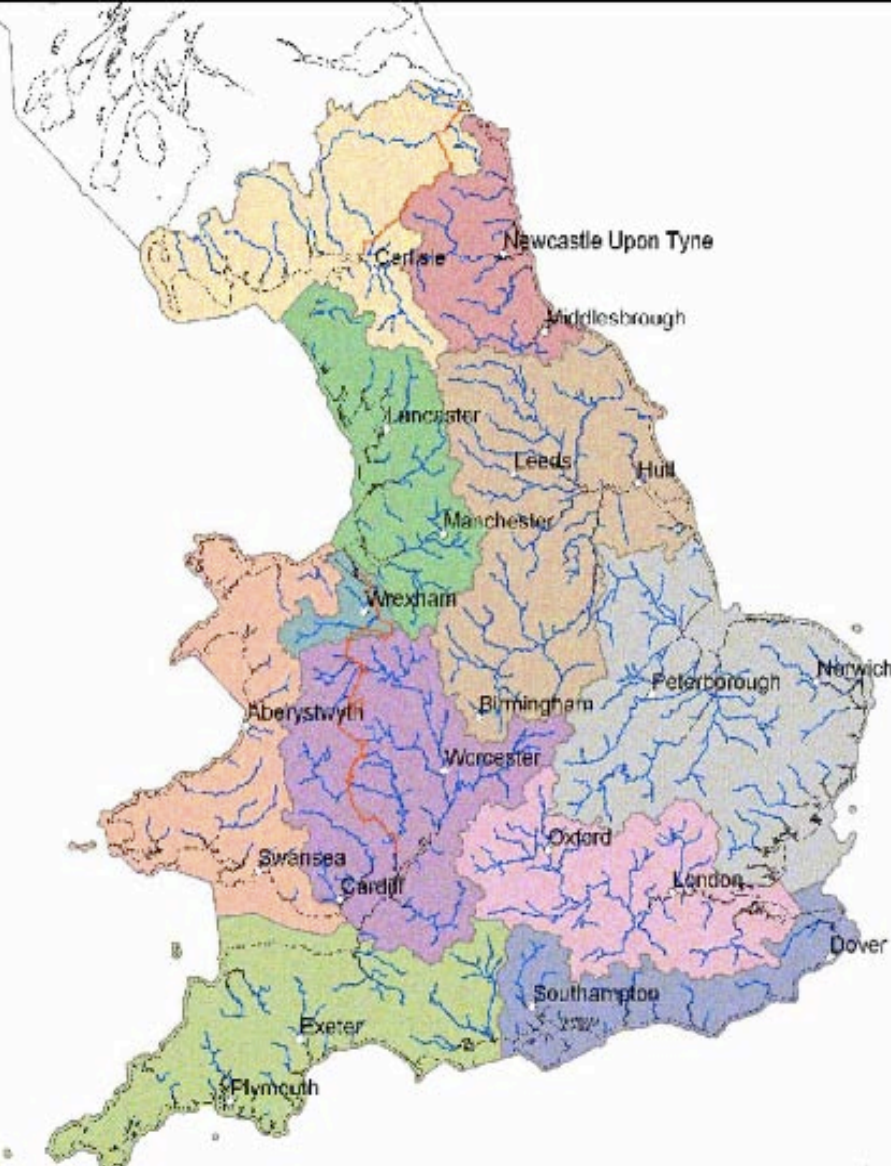
Individuals/Groups, advice

National and International River Basin Districts
 Submissions in accordance with Article 3
 of the Water Framework Directive

Version 22/03/2007

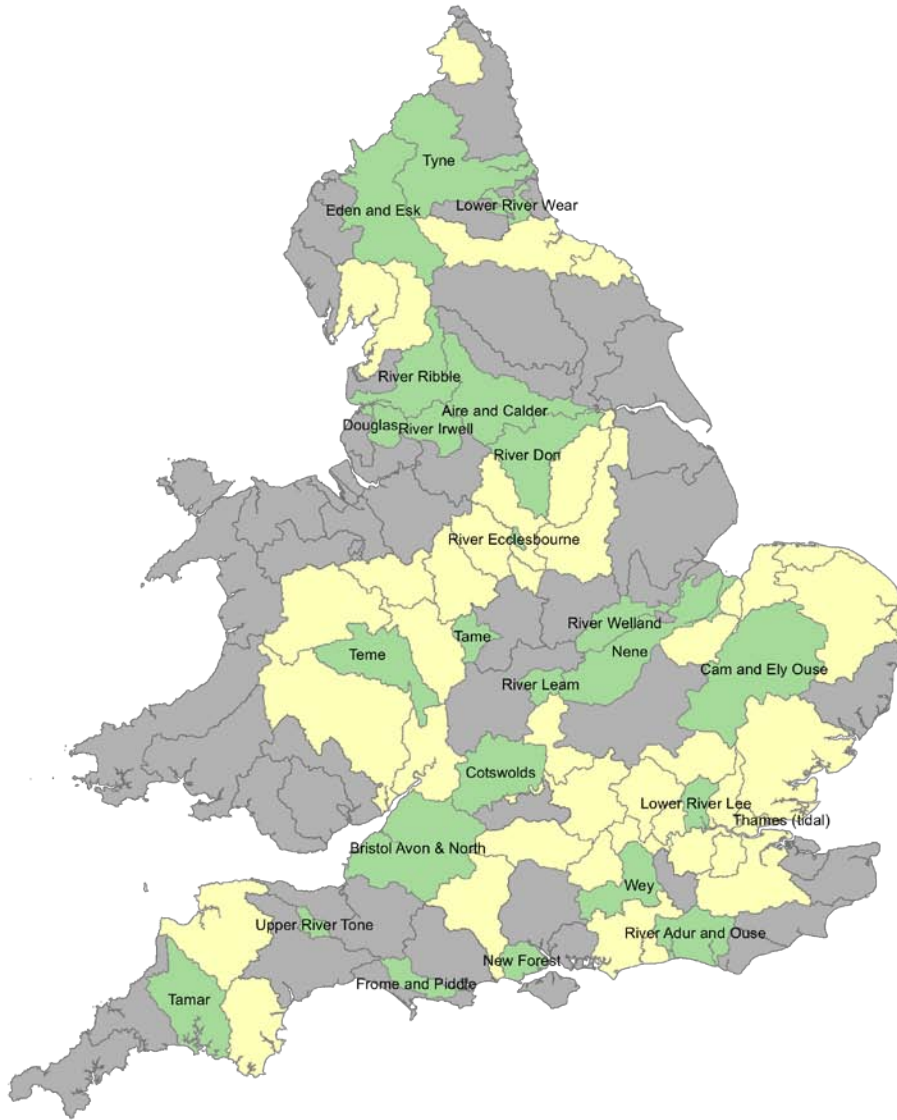
- National River Basin Districts⁽¹⁾
(within EU27)
- National River Basin Districts⁽¹⁾
(outside EU27)
- International River Basin Districts⁽²⁾
(within EU27)
- International River Basin Districts⁽²⁾
(outside EU27)
- Coastal Waters⁽³⁾
- RBD boundary
- Country border
- EU27 boundary

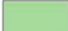
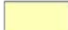
Map produced by WRU, UK on behalf of
 European Commission, DG Environment, March 2007.



River Basin Districts –
 ranging in size in E&W from
 c. 10000 km² to 27000 km²

The catchment based approach



-  Catchment where a Pilot will be evaluated by Defra
-  Wider Catchment Initiatives

Pilot catchments –
ranging from
c. 500 km² to 3000 km²

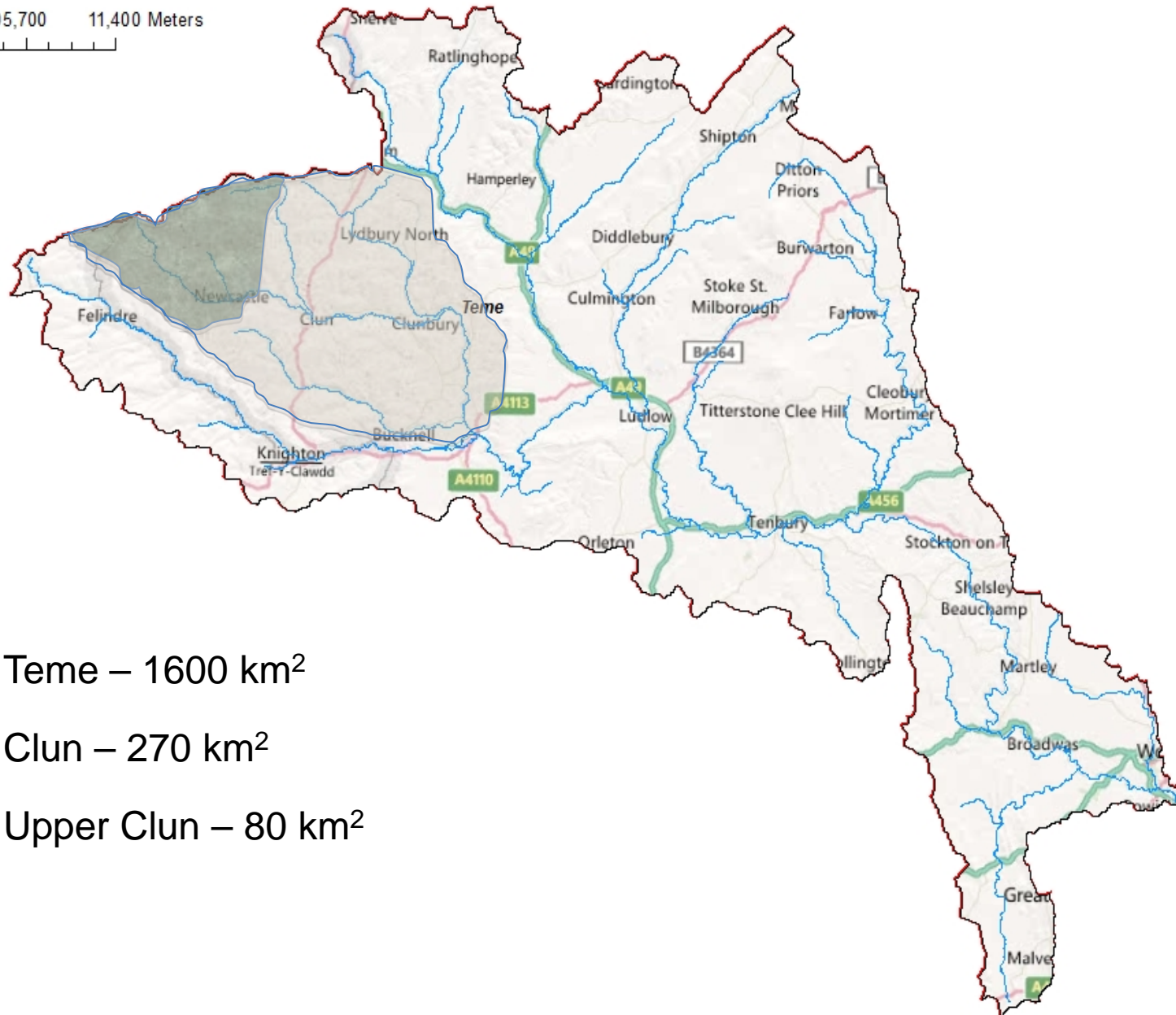
Severn River Basin District



Teme Catchment



0 2,850,700 11,400 Meters



Teme – 1600 km²

Clun – 270 km²

Upper Clun – 80 km²

Layered Systems

Who to engage with and for what purpose?

Severn (21600 km²) – River Basin District; EA-led

Teme (1600 km²) – major tributary; Rivers Trust-led Defra Pilot Catchment

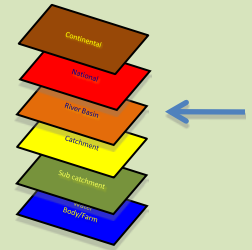
Clun (280 km²) – tributary of the Teme; AONB-led catchment plan to save a SAC

Upper Clun (80 km²) – headwaters area; Land, Life and Livelihoods community-led



Severn River Basin Plan

2012 consultation – still top-down?



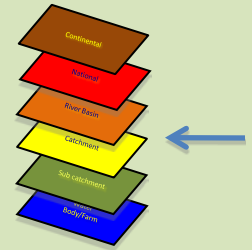
- **Who?** EA (chair), Nat Eng; FC (Wales); Water Cos; NFU; County Council, County Wildlife Trust; Consumer Council for Water (Wales); British Waterways
- **Driven by** requirement of WFD
- **contribute evidence** to enable decision making.
- **devise and track measures and projects;**
- **work together to develop river basin management plans** and other documents that are required;
- **liaise** between members, their sectors and/or catchment groups to ensure a broad base for decision-making and communication.

Water for life and livelihoods

River basin management: working together
Severn River Basin District

Teme Pilot Catchment

12 months to develop a plan!

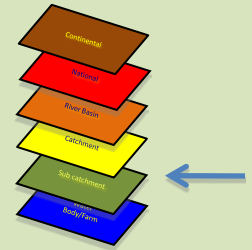


- **Who?** Severn Rivers Trust (Chair), Nat Eng, EA, Shropshire Hills AONB, Malvern Hills AONB, FC, Woodland Trust, 3 Wildlife Trust, Severn Trent Water, NFU, 3 County Councils, Land, Life and Livelihoods Group. (Defra)
- **Driven by** Defra's need for new approach to WFD River Basin Planning
- **Collate information** to identify issues and actions
- Reach a **shared understanding** of the catchment's priorities.
- **Identify** a range of **actions**.
- **Strengthen collaborative working** to action implementation.
- **Increase community participation**.
- **Identify best practice** components that can be replicated in similar projects.

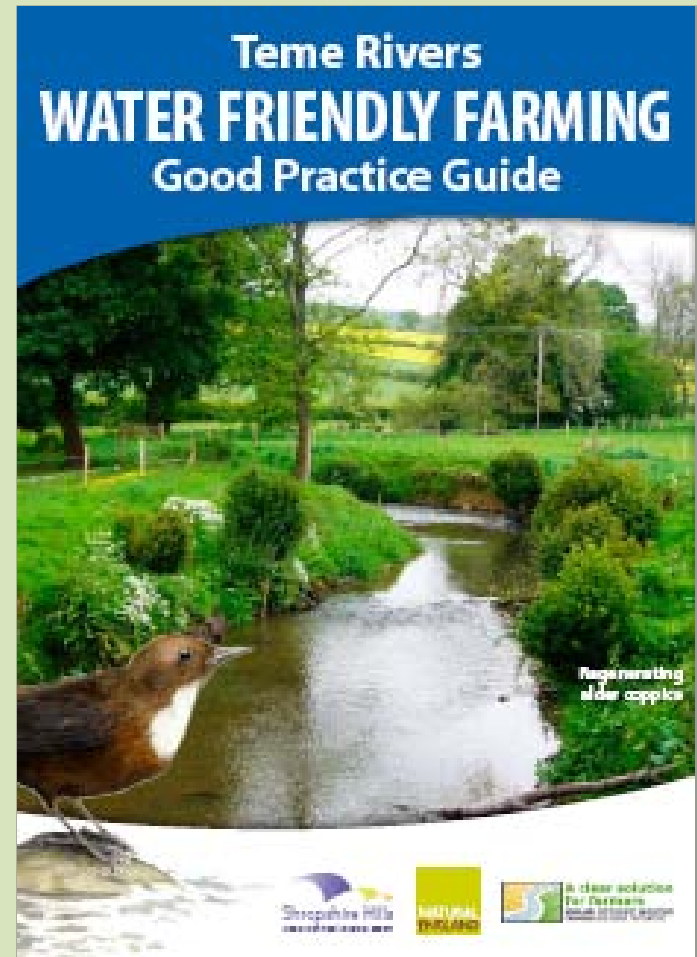


Clun Catchment Plan

12 years to save the freshwater pearl mussel

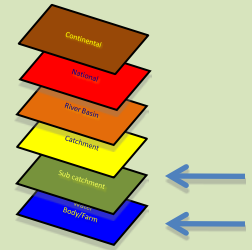


- **Who?** Shropshire Hills AONB (Chair), Nat Eng, EA, Teme Pilot Catchment, FC, Shropshire Wildlife Trust, Shropshire County Council, LLL group in the Clun Forest, Upper Clun Community Wildlife Group, local farmers
- **Driven by** rapid decline of SAC at bottom 3 km – Freshwater Pearl Mussels as iconic/indicator species. But including (contributing?) factors – alder disease; bank erosion; loss of water retention in head waters; siltation; landscape value

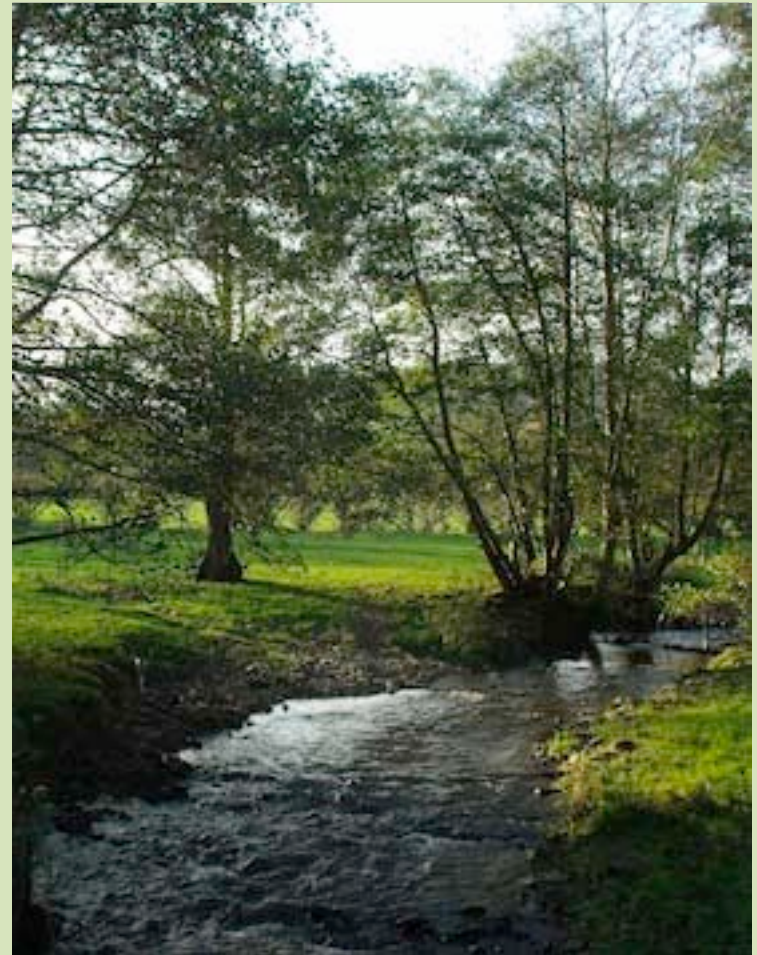


Upper Clun Catchment Project

All about Land Life and Livelihoods (LLL)



- **Who?** LLL group (Chair), local farmers, local residents, Shropshire Hills AONB, EA, Upper Clun Community Wildlife Group. (funded by community grants)
- An integrated catchment management project to involve the whole community.
- **Driven by** tradition, sense of place, landscape and securing livelihoods - upland sheep farmers reliance on grants are increasingly environmentally linked.
- Includes all life (soil, air, water, plants, animals and people) and to sustain rural livelihoods.



Land, Life and Livelihoods

- a community initiative in the Clun Forest, Shropshire, run by local volunteers

"I would like to farm in a way that provides me with a living, benefits the land, enhances the community and has a future"

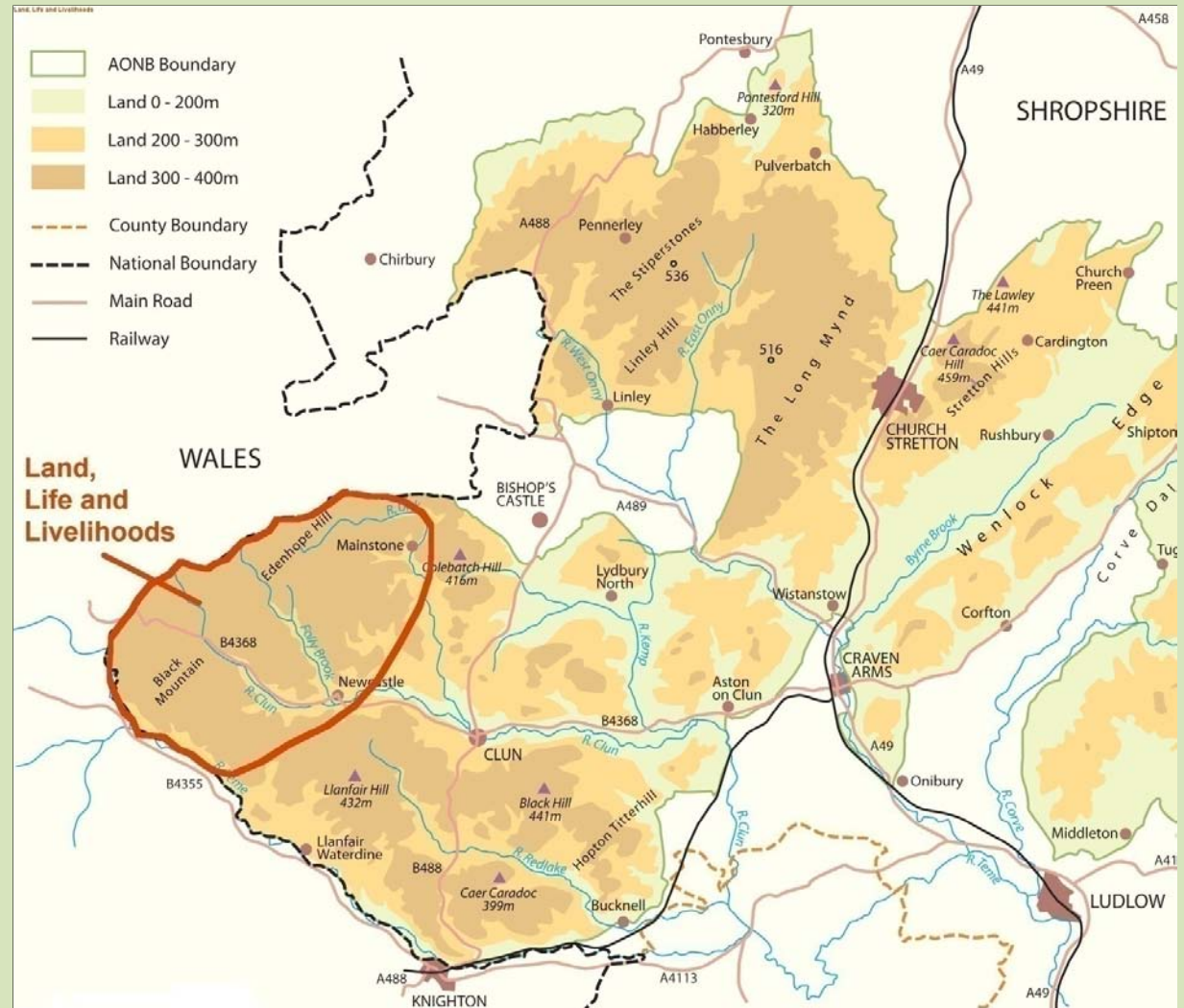


Land, Life and Livelihoods' work covers 3 Clun Forest parishes

- Bettws y Crwyn
- Mainstone
- Newcastle

The parishes are in the Shropshire Hills Area of Outstanding Natural Beauty (AONB).

Funding comes from **community grants**

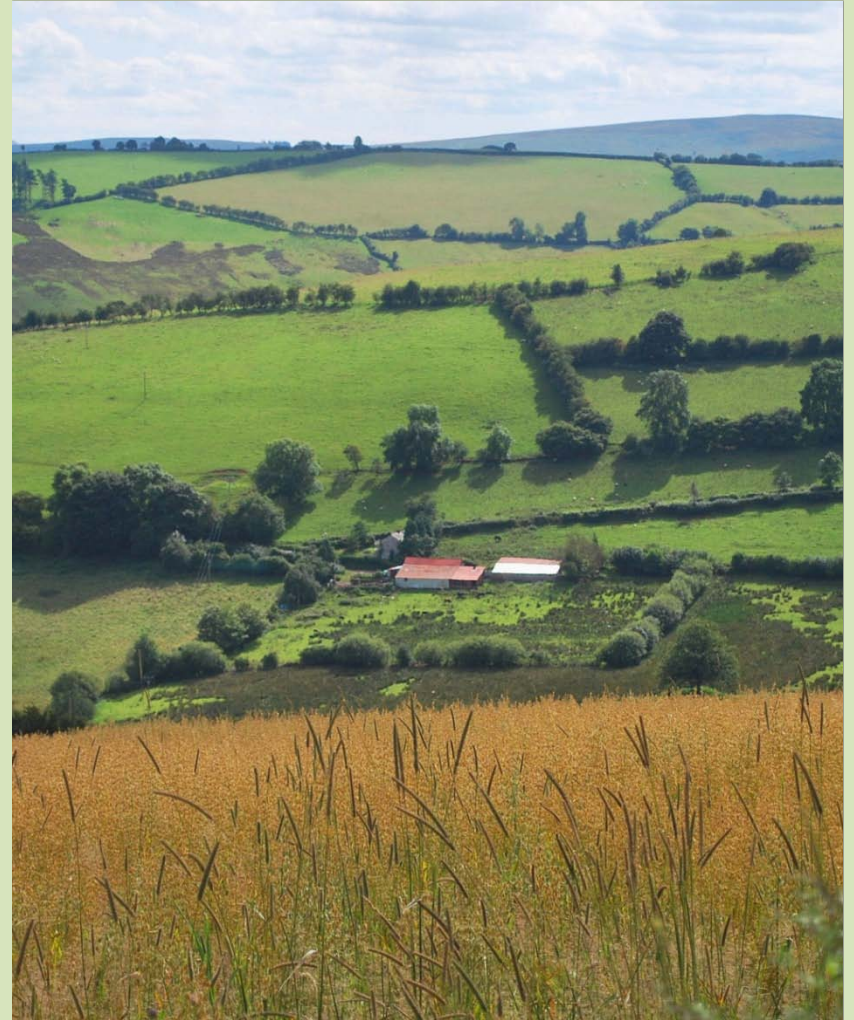


Land, Life and Livelihoods Vision

The work of Land, Life and Livelihoods responds to local needs and aims to care for all life, to protect the beauty and tranquillity of the area and support farms, rural businesses and the local community.

Our values are those of a strong, caring community rooted in the countryside.

We respect the area's unique beauty, tranquillity and biodiversity and recognise the vital contribution farming and land management make to its survival.



Working with farmers and landowners ...

Through Farmers' Dens, workshops and visits, free one to one advice for local farmers provided from invited specialists on all aspects of farming and land management. Help offered with:

- Agri-environment schemes and what happens after ESA
- Planning and housing issues
- Woodland and water management
- Wildlife conservation
- Energy use
- Organic conversion



Working with the whole community

Running events for all to explore, celebrate and learn about the Clun Forest

farm visits, river and woodland walks, ceilidhs, farm tours and landscape and local history bus tours

farmer events - events on the river, woodland management, cross compliance, evening for young farmers)



Working together

Land, Life and Livelihoods works with a range of organisations and local groups to promote understanding, care for and celebration of the land:

- Trustees of Black Mountain Chapel
- Shropshire Hills AONB Partnership
- Bettws History Group
- DEFRA
- Natural England
- Environment Agency
- Catchment Sensitive Farming Initiative
- Severn Rivers Trust
- Newcastle & District Garden Society
- Upper Clun Community Wildlife Group
- Daysdrove
- Newcastle Village Show
- Caring for God's Acre



We are always looking for other groups and organisations who may like to work with us.

Supporting local producers and services



Land, Life and Livelihoods supports and helps local producers and businesses by:

- ▶ Providing free advice through our business advisory sessions
- ▶ Promoting local businesses through our newsletters, eg Daysdrove (abattoir)
- ▶ Buying and using local products and services, eg local venues and food for events
- ▶ Producing a Clun Forest products and services directory

Some Conclusions

- The appropriate scale for community led initiatives is $< 100 \text{ km}^2$
 - The essential building block of **integrated** catchment management
 - Highly dependent on topography
- At this scale there is:
 - a sense of place,
 - ownership,
 - a culture of which the environment is part
- It needs strong leadership/charisma, support (technical and financial) and political backing
- But there are limits to volunteering!



And the Supporting Research

- Research to understand the system has to be carried out at a manageable scale too
- Plot and field scale to 10-80 km² seems to be favoured
- The challenge is in scaling up understanding to decision-making for the whole catchment... or river basin



The Demonstration Test Catchments Platform

Eden

(Cumbria)



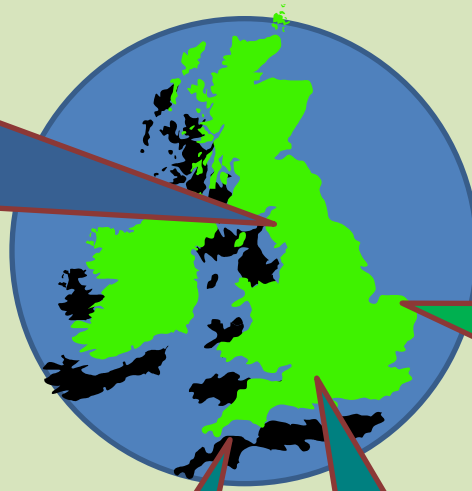
Livestock and mixed farming
Consortium includes:
Lancaster University,
Newcastle University,
Durham University,
University of Cumbria,
Eden Rivers Trust, CEH
and others...

Wensum

(Norfolk)



Arable farming
Consortium includes:
University of East
Anglia, Scott Wilson,
Cranfield University,
British Geological
Survey, Entec, NIAB
and others...



Tamar

(Devon/Cornwall)



River Tamar
Demonstration Test Catchment
Associate Partner

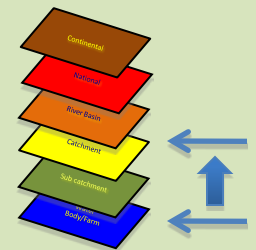
Avon

(Hampshire)

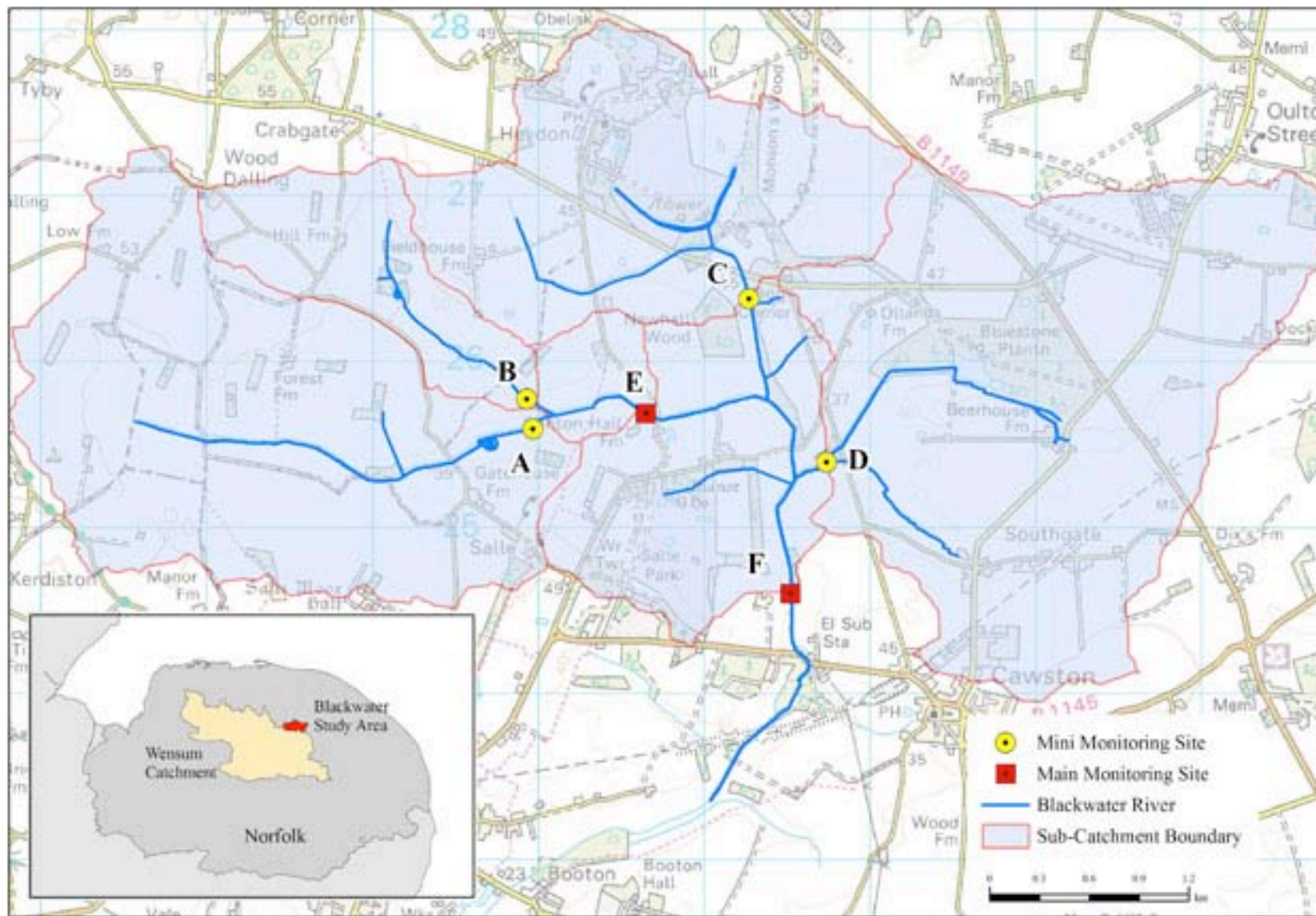


Mixed lowland farming
Consortium includes:
ADAS, University of
Reading, University of
Bristol, QMUL, ENTEC and
others...

Working at farm
and field scale –
scaling up to the
whole catchment



Demonstration
Test
Catchments



Thank you for listening

