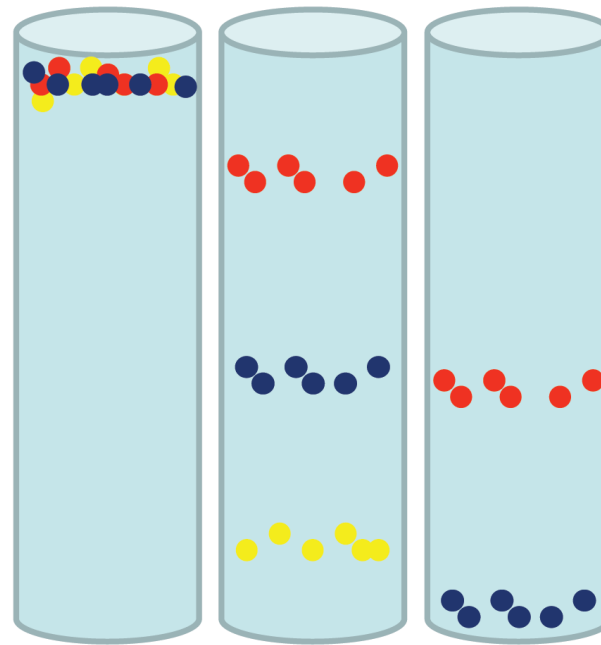


Ion Chromatography

This technique involves separating the chemicals present in water and then measuring their concentration.

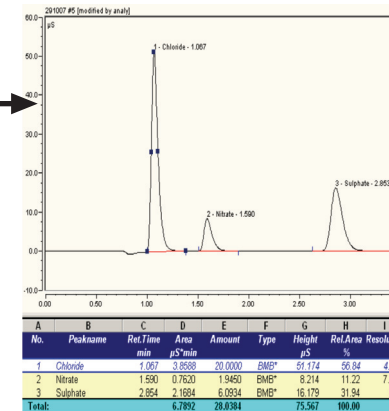
How does it work?

A sample of water is injected onto a column, where it is moved along by a carrier, or eluent



Time (0 to 2 minutes)

Over a few minutes the chemicals separate and can be measured by a detector one by one



Computer output

Chemicals we measure with this technique

- Sulphate
- Nitrate
- Chloride