

Exploitation of northern peatlands and biodiversity maintenance: a conflict between economy and ecology

Steve Chapman¹, Alexandre Buttler^{2,3}, André-Jean Francez⁴, Fatima Laggoun-Défarge⁵, Harri Vasander⁶, Michael Schlöter⁷, Jean Combe³, Philippe Grosvernier⁸, Hauke Harms⁹, Daniel Epron¹⁰, Daniel Gilbert¹⁰, and Edward Mitchell^{3,11}

Peatlands are ecosystems of exceptional conservation value because of their beauty, biodiversity, importance in global geochemical cycles, and the paleoenvironmental records they preserve. Commercial extraction and drainage for forestry or agriculture have caused the destruction of many peatlands, especially in or close to urban areas of the northern temperate zone. Are these commercial and environmental interests irreconcilable? A close analysis suggests that limited peat extraction may actually increase biodiversity in some cases, and may be sustainable over the long term. As we learn more about how peatlands spontaneously regenerate following disturbance, and what conditions govern the re-establishment of a diverse community and the ability to sequester carbon, we increase our chances of being able to restore damaged peatlands. Preserving the chronological records hidden in the peat profile, the natural heritage value of peatlands, and the bulk of sequestered carbon, however, will remain incompatible with any form of exploitation.

Front Ecol Environ 2003; 1(10): 525–532

Peatlands are the most widespread type of wetlands in the world, representing 50–70% of global wetlands. The impact of human activities on ecosystems can hardly be illustrated more dramatically than in the contrast between a pristine peatland and the same ecosystem degraded by peat mining into an endless brown desert surface (Figures 1 and 2). The difference illustrates the

importance of the conflict between conservation and the industrial exploitation of natural resources, and the different ways people appreciate natural ecosystems.

Peatlands represent a vital habitat for many unique species, play an important role as a pool and sink for carbon (C), contribute to the equilibration of the water cycle, and contain a wealth of information in the remains of plants, animals, and atmospheric particles deposited and stored in the peat profile (Gorham 1991b; Barber 1993). Limited exploitation may provide timber, food for subsistence lifestyles, and other plant products, some of medicinal value. However, most of the time these ecosystems have also been seen as a valuable natural resource in the form of peat itself, which has many uses, including as a fuel, animal bedding, and a growth substrate in horticulture and agriculture.

These conflicts raise a number of questions that we must address before we can decide if the exploitation of peatlands can be sustainable over the long term (Schilstra 2001). Where are peatlands located? How much peat is there to be exploited? How does peat extraction affect the global C budget, water cycles, climate, and biodiversity? Can extraction be done sustainably, and can damaged peatlands be restored to their original condition? How long does it take to build up a harvestable amount of peat?

■ From exploitation to restoration and sustainability

While many of these questions do not have a definitive answer, our understanding of peatland ecology has improved substantially in recent years. For example,

In a nutshell:

- Peatlands have high commercial and ecosystem values
- Exploitation has caused the loss of many peatlands, especially near urban areas
- In some cases these conflicting interests may be reconciled, and some exploitation may actually increase biodiversity
- The study of regeneration patterns and processes will improve our ability to restore damaged peatlands and provide guidelines for sustainable use

¹The Macaulay Institute, Craigiebuckler, Aberdeen, UK; (S.Chapman@macaulay.ac.uk) ²Laboratoire de Chrono-Ecologie, University of Franche-Comté, Besançon, France; ³Swiss Federal Research Institute, Lausanne, Switzerland; ⁴Equipe Interactions Biologiques et Transferts de Matières, University of Rennes, Rennes, France; ⁵Institut des Sciences de la Terre d'Orléans, University of Orléans, Orléans, France; ⁶Dept of Forest Ecology, University of Helsinki, Helsinki, Finland; ⁷GSF-National Research Center for Environment and Health, Institute of Soil Ecology, Neuherberg, Germany; ⁸LIN'eco, Reconvieler, Switzerland; ⁹Swiss Federal Institute of Technology, Lausanne, Switzerland; ¹⁰Laboratoire de Biologie et Ecophysiologie, University of Franche-Comté, Besançon, France; ¹¹Dept of Biological Sciences, University of Alaska, Anchorage, AK(afeam@uaa.alaska.edu)



Figure 1. A pristine peatland.

research has shown that under some conditions, *Sphagnum* mosses (also called peat mosses), the main peat builders, can reestablish on former surfaces of bare peat (Grosvernier *et al.* 1995; Figures 3 and 4). Although much more needs to be understood about these processes, it is possible to envision the active restoration of bare mined peatlands (Grosvernier *et al.* 1995; Girard *et al.* 2002; Gorham and Rochefort 2003).

Until recently, the conflict between conservationists and the peat industry seemed to be irreconcilable. Indeed, preserving the archives and, more generally, the natural heritage value and the bulk of sequestered C of peatlands will remain incompatible with any form of exploitation. However, a closer analysis suggests that, at least in some cases, limited peat extraction can actually increase biodiversity, and may be sustainable in the long term. Much work remains to be done, but at last both parties are working together to solve the problem. This is well illustrated by the recent publication of *The wise use of mires and peatlands* (Joosten and Clarke 2002), a landmark book which was the product of a joint effort by the International Mire Conservation Group (a group of scientists aiming to preserve peatlands) and the International Peat Society, which is involved in developing the commercial exploitation of peatlands. Several leading companies within the peat industry now seem clearly com-

mitted to making peat exploitation a truly sustainable practice. There are reasons to hope that the management of peatlands could soon be a good test case of a successful collaboration between conservationists, scientists, and industry, and an example for the management of other ecosystems, such as forests and the sea.

In this review we will present some general facts about northern peatlands and the history of their exploitation, analyze how peat exploitation may be made sustainable and compatible with conservation goals, outline current research needs, and present a research initiative aimed at reconciling commercial exploitation of peat with the preservation of biodiversity in peatland ecosystems – the EC-funded project RECIFE.

■ Extent of northern peatlands and their significance in the C cycle

Within the northern temperate zone, peatlands are widespread within the boreal fringe, occupying substantial areas of Canada, the US (particularly Alaska), Fennoscandia, and the former USSR. Less extensive deposits are found in Iceland, Ireland, the UK, Germany, and Poland (Joosten and Clarke 2002). While estimates vary considerably between sources (Clymo *et al.* 1998), it has been estimated that northern peatlands cover 346

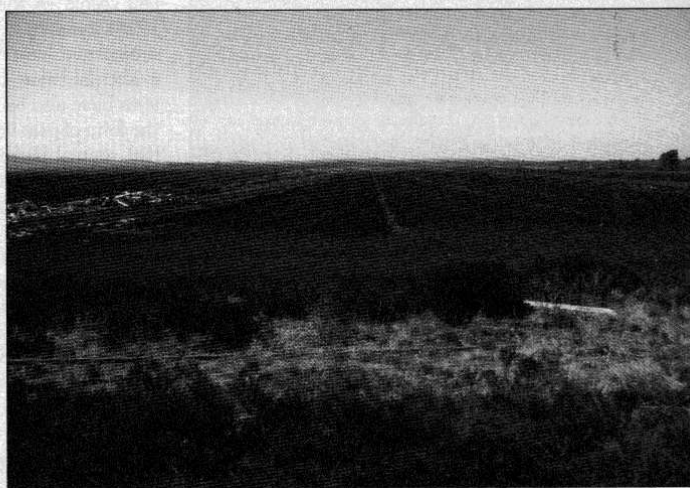


Figure 2. Example of an Irish peatland in which peat is currently being harvested on an industrial scale. This type of exploitation is the most damaging to peatlands, as all the vegetation is removed.

million ha and hold 455 billion metric tons of C – slightly less than the amount contained in all living organisms, or in all atmospheric CO₂ (Gorham 1991b).

This important C pool has been slowly eroded by humans through drainage, conversion to agriculture and forestry, and peat mining. The global rate of loss of active peatlands (where peat is accumulating naturally) has been estimated to be 0.1% per year (Joosten and Clarke 2002). Within Europe, however, the losses have been much greater; there, 52% of active peatlands have now been lost, and in certain countries such as Denmark and the Netherlands, where active peatlands once covered over 20% of the land surface, virtually all peatlands are gone (Joosten and Clarke 2002).

Despite these losses, active northern peatlands continue to fix C at a rate of approximately 70 million metric tons per year (Gorham 1991b; Clymo *et al.* 1998); at the same time, they generally release roughly 50 million metric tons of methane per year (Gorham 1991b). This emission is very important in determining peatlands' role in global warming, since methane is about 70 times more effective as a greenhouse gas than CO₂ on a 20-year time scale (and 20 times greater on a 100-year time scale). It would appear therefore that active peatlands are positive contributors to global warming, and that peatland utilization actually reduces this contribution, at least in the short term (Schilstra 2001).

■ Past and present uses and abuses

Peat has probably been used for millennia as a fuel in northern treeless areas such as the Scottish islands and Ireland, where the practice continues to this day. Industrial extraction of fuel peat began in Europe in the 19th century with the invention of peat-working machines (Lappalainen 1996). In southern Sweden, the cultivation of peat soils dates back to the early Iron Age (Egelmark 2000). The conversion of peatlands to agricultural use was evident in the Netherlands as early as the 10th to 14th centuries (van den Bos *pers comm*), while in England, medieval fuel peat workings gave rise to the flooded lakes of the Norfolk Broads. Extensive drainage of bogs and fens for agricultural use in Europe began in the 17th century. Since the middle of the 20th century, large peatland areas have been drained for forestry.

In 1995, 71 million m³ of energy peat were produced (Lappalainen 1996) and the C flux due to combustion is estimated to be 2.6 million metric tons per year, equivalent to only about 0.4% of the 6.5 billion metric tons of flux due to all fossil energies (Gorham 1991b). Today, half of all peat extracted is used in horticulture or for soil conditioning, and practically all Canadian peat is used in this way (Lappalainen 1996). How much of this C is converted to CO₂ is unknown.

Of the active peatlands lost over time in the non-tropical world, 50% has been to agriculture, 30% to forestry, 10% to peat extraction, and the remainder to urbaniza-



Courtesy of E. Mitchell

Figure 3. Peat profile taken on a mined peatland where successful regeneration has occurred through initial colonization by the moss *Polytrichum strictum* and later recolonization by *Sphagnum fallax*. The former peat surface is visible at the bottom. The dark brown layer is the former peat surface that has undergone partial decomposition under oxygenated conditions. The less decomposed, lighter brown peat with recognizable plant remains lies above, and the living mosses and vascular plants are at the top.

tion, erosion, water reservoirs, and other uses. Total losses add up to approximately 500 000 km², approximately the area of Spain. This represents about 16% of peatlands' former extent. Today, however, losses are due almost entirely to agriculture and forestry (> 99.8%), whereas losses due to peat extraction are very minor (< 0.2%) (Joosten and Clarke 2002). Since the 1950s, for example, Finland has lost 60% of its former extensive active peatland area to forestry and many of the more fertile peatlands (fens) had been used for agriculture long before then (Heikkilä and Lindholm 2000).

■ Global vs regional loss: conservation issues

On the global scale, it is unclear whether the amount of peat being harvested exceeds what is being accumulated in natural peatlands. Some authorities suggest accumula-



Courtesy of F. Grosvernier

Figure 4. *Sphagnum* recolonization under the protection of cottongrass *Eriophorum vaginatum*, growing over a former bare peat surface in the Swiss Jura Mountains. Inset shows sliced tussock with *Sphagnum* growing between two tussocks.

tion exceeds losses (Gorham 1991b), while others indicate the reverse (Schilstra 2001; Joosten and Clarke 2002). This partially depends upon the definitions used, as well as whether one is considering peat itself or the C that comes from it, which may not be totally lost when the peat is used in horticulture or agriculture.

The total peat budget, however, is only part of the story. Most peat mining takes place close to urban areas, mainly in locations with easy access. In contrast, most pristine peatlands are located in remote places such as the Hudson Bay lowlands and western Siberia, where mining will probably never be economically viable for logistical reasons (Joosten and Clarke 2002). In central Europe, southern Québec, and southern Ontario, considerable proportions of the original peatland surfaces have been lost (Gorham 1991a; Lindsay 1993; Desrochers *et al.* 2000; Joosten and Clarke 2002), but more peatlands are being protected in the less accessible areas. For example, 70% of the protected peatlands in Sweden are in the north of the country (Egelmark 2000), while in Finland, although 9% of the peatlands are protected, this drops to only 3% in the southern regions (Heikkilä and Lindholm 2000). Even more extreme is the case of the southern St Lawrence River region of Québec, where only one out of 150 bogs are currently protected (Desrochers *et al.* 2000).

Peatlands located in the more southern regions are different from ones located further north; they often have distinct faunas and floras or isolated and possibly genetically divergent populations of circum-boreal species (Desrochers *et al.* 2000). Furthermore, they often contain a longer paleoenvironmental record, as this peat

started to accumulate when the more northern locations were still under ice (Halsey *et al.* 1998; Halsey *et al.* 2000). Therefore, despite what may be true on a global scale, peatlands might not be interchangeable when assessing their value and function at regional or local scales.

■ Management approaches

Depending on the present state of a peatland, we can identify four main management strategies.

Conservation

Undisturbed sites of high scientific and biodiversity value may be set aside for conservation as natural heritage.

Extraction is not compatible, and management of these sites is usually limited.

Restoration

Disturbed peatlands may be restored to conditions similar to pristine sites. This may help countries balance their C budget, or at least reduce their net C emission. This would lead to the restoration of degraded peatlands left over after mining, or currently used for agriculture, which have been identified as major sources of CO₂ (Kasimir-Klemedtsson *et al.* 1997). In the temperate and boreal zones, restoration usually aims at reestablishing *Sphagnum* mosses (Rochefort 2000). However, abandoned mined sites are often left with a complex topography that may hinder the successful re-establishment of important species (eg *Sphagnum* mosses). In such cases, it may be best to further extract a limited amount of peat, or to modify the topography to restore the site's hydrology (Bugnon *et al.* 1997; Price *et al.* 2002). Traditional peat cutting often left favorable conditions (ie patchy structures with ditches; Figure 5), while industrial exploitation, which scrapes the topsoil from large areas, is much more problematic (Figures 2 and 6).

Favorable microclimatic conditions are required for a successful *Sphagnum* recolonization (Grosvernier *et al.* 1995; Campeau and Rochefort 1996; Buttler *et al.* 1998; Rochefort and Bastien 1998). In the case of spontaneous regeneration, these conditions are often provided by companion keystone species – usually either mosses such as *Polytrichum strictum* (Figure 3) or herbaceous plants such as *Eriophorum vaginatum* (Figure 4) that are able to grow

directly on the bare peat (Grosvernier *et al.* 1995; Robert *et al.* 1999). Spontaneous regeneration is the exception rather than the rule, however. In the Swiss Jura Mountains, only 25% of the abandoned cutover bog surfaces that have not been colonized by trees show signs of spontaneous regeneration (Matthey 1996), while less than 10% of the surface of a peatland in Québec showed *Sphagnum* recolonization 30 years after abandonment (Price and Whitehead 2001).

In some cases the restoration of peatlands at least appears to be feasible, with the return of some pioneer species. However, the re-establishment of a typical bog community has not yet been observed (Feldmeyer-Christe *et al.* 2001), and the long-term evolution of these secondary sites remains unclear (Gorham and Rochefort 2003). We need to better understand why regeneration succeeds in some cases and not in others. We also need to monitor the evolution of restored sites, to determine that their structure and function can indeed be compared to those of pristine sites, or that they are at least heading in the right direction in terms of the re-establishment of biodiversity and long-term C sequestration. The question is, which indicators should we be using to monitor the success of restoration?

Rehabilitation

After disturbance, transitional bog habitats with high biodiversity, and/or representing habitat for rare species, can be maintained or recreated through the removal of peat; this has real potential for reconciling peat exploitation with biodiversity issues. These habitats may be locally rare, or may have disappeared altogether due to natural succession.

In countries such as Switzerland, where the total surface area of remaining peatlands is small, several rare or endangered species now benefit from secondary habitats created by former peat extraction activities. These include the peat mosses *Sphagnum affine*, *Sphagnum contortum*, *Sphagnum fimbriatum*, *Sphagnum teres*, and *Sphagnum warnstorffii*, which are restricted to fens or often found in secondary bog vegetation (Feldmeyer-Christe *et al.* 2001), as well as dragonfly species such as *Leucorrhinia pectoralis*, *Aeshna subarctica*, *Lestes virens vestalis*, and *Coenagrion hastulatum*. The latter are found in the transitional habitats that often develop in peat extraction ditches (eg *Sphagno-Utricularion*, *Caricion lasiocarpae*, or *Magnocaricion* plant communities), but are absent from the late-succession stages of bog development (Delarze *et al.* 1998). In Sweden, it was found that the regional diversity of peat mosses had been increased in old hand-cut pits after spon-



Figure 5. Traditional peat cutting in Scotland. This kind of relatively low-impact exploitation of peatlands may increase biodiversity by recreating transitional habitats.

taneous regeneration (Soro *et al.* 1999). Some northern species (eg *Sphagnum lindbergii*) not found in pristine mire vegetation in more southern areas could nevertheless be found in these local pits.

Small isolated wetlands play a much larger role in the

Definitions

Peatland: area with or without vegetation with a naturally accumulated peat layer at the surface

Mire: a peatland where peat is currently being formed

Bog: a mire that receives most or all of its water supply from rainfall; usually nutrient-poor and raised above the adjacent land

Fen: a mire that forms in a land depression and receives water from groundwater; usually nutrient-rich

Wetlands: ecosystems that have shallow water or flooded soils for part of the growing season, have organisms adapted to this wet environment, and have soil indicators of this flooding

Mire ecosystems are characterized by the unique ability to accumulate and store dead organic matter from *Sphagnum* and many other non-moss species as peat, under conditions of almost permanent water saturation. Sites that are no longer accumulating peat, including mined or cutover peat, would not be considered mires.

(Mitsch and Gosselink 2000; Joosten and Clarke 2002)

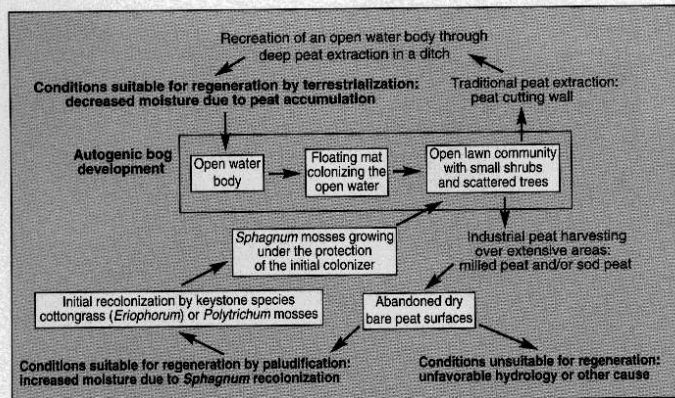


Figure 6. Simplified diagram of the natural vegetation succession leading to *Sphagnum*-dominated peatlands and how these communities may change following peat harvesting. Peatlands often result from the infilling of a water body by aquatic vegetation followed by the establishment of sedge communities. Peat harvesting reduces the peat thickness either homogeneously, if extensive surfaces are harvested industrially, or heterogeneously, when done in a traditional manner. The patterns, speed, and likelihood of regeneration differ, and one of the aims of project RECIPE is to understand the determinants of these regeneration patterns.

maintenance of biodiversity than their size would suggest (Gibbs 1993). By increasing habitat diversity, limited peat exploitation can help sustain endangered species by reducing the distance between favorable habitats, thereby allowing easier migration. The goal of the rehabilitation strategy is to prevent the loss of species linked to ephemeral habitats with a strong dynamic and high C sequestration potential.

For sustainable exploitation to be possible, the proportion of the total surface being harvested in any one year should be small enough to allow previously harvested areas to reach the desired successional stage before they are due for harvesting again. Recolonization of the peat surface by pioneer species is not enough; the time between two successive harvests must be long enough (decades or even centuries) to allow secondary succession to reach the original typical bog community. Indeed, the observation of pristine and exploited Irish peatlands has revealed how sensitive *Sphagnum* bog species are to repeated peat cutting (Cooper *et al.* 2001), while in Canada, bird communities characteristic of natural bogs have failed to return to cutover sites, even several decades after abandonment (Desrochers *et al.* 1998). The rotation approach is similar to traditional slash-and-burn agriculture and situations in which a relatively small proportion of the total area is clear-cut every year. In both cases, the system can only support a relatively minor exploitation pressure.

Although this approach is clearly compatible with the maintenance or even the enhancement of biodiversity, and could result in a steady state in C being reached with no further sequestration of the element, it will have clear impacts on the ongoing C storage capacity of the peat-

land, and will also cause some loss of the historical and paleoenvironmental records (Buckland 1993). We need to understand the patterns and processes of this dynamic, both to find reliable indicators of ecosystem function and to set up sound monitoring programs to assess the consequences of rehabilitation.

Conversion

Even when most of the peat has been removed, former peatlands may acquire a high value for nature conservancy. If these degenerate surfaces are converted into extensively used agricultural sites (ie lightly grazed or cut), they may then constitute a vital habitat for rare or endangered species as, for example, nutrient-poor, species-rich wet hay meadows. This goal may be compatible with a general policy to reduce the emission of CO₂ from organic soils or even restore their C sequestering capacity (Kasimir-Klemetsson *et al.* 1997; Craft and Richardson 1998). Managers need to know what the requirements of rare and endangered species are, to optimize the ecological value of these surfaces. Here, too, a monitoring program will be required.

■ A new research initiative to improve management

In order to provide information to give conservationists and peat extraction managers options to restore peat accumulation and C sequestration in peatlands that have either been abandoned or designated for restoration, we initiated a project called Reconciling Commercial Exploitation of Peat with Biodiversity in Peatland Ecosystems (RECIPE) (www.nbu.ac.uk/biota/recipe_page.htm). The project's objectives are to (1) perform a socioeconomic appraisal of the current impact of peatland utilization and restoration practices; (2) identify combinations of water table, vegetation, microbiology, and chemistry favorable to the re-establishment of peatland biodiversity, C sequestration, and long-term regeneration; (3) develop guidelines for sustainable management; and (4) quantify future requirements for sustainable peatland management, recognizing its value within the rural economy.

A particular innovation of this research effort is the combination and synthesis of ecological, management, and socioeconomic approaches. By achieving these objectives in the context of current management practices, RECIPE will provide guidelines for sustainable management that will reconcile peat use with the maintenance of

biodiversity. Studies will be made in a range of regenerating peatlands, from bare peat to well-established secondary vegetation, including gradients of latitude and/or climate, fertility, and anthropogenic influence, as well as field regeneration experiments in four locations in Europe. The net impact of different keystone plant species will be assessed in these experiments. The ultimate goal is to develop indicators of change in the physical, chemical, and biological characteristics of peat.

■ Which indicators should we use?

There is no *a priori* reason to believe that one biological, physical, or chemical indicator is more appropriate than another. Indeed, different taxonomic groups respond differently to environmental gradients and ecosystem dynamics (Francez *et al.* 2000; Mitchell *et al.* 2000). Some groups seem to be the engineers of the observed changes in ecosystem structure, but this is often unclear. For example, *Sphagnum* moss is clearly a key player in peatland regeneration, but its re-establishment on bare peat usually requires a companion species. However, the development of a dense *Sphagnum* carpet does not seem to be enough to restore important processes such as C sequestration (Francez *et al.* 2000). This is a case where ecosystem structure and function are disconnected.

Other indicators could therefore be more appropriate for this, including microbes (Gilbert *et al.* 1998; Croft *et al.* 2001), testate amoebae (Buttler *et al.* 1996; Mitchell *et al.* 1999; Charman 2001), vertebrates (Desrochers *et al.* 1998; Mazerolle *et al.* 2001), and biochemical or physical markers (Francez and Vasander 1995; Bourdon *et al.* 2000). Because they react faster than other indicators, microorganisms and biochemical markers are especially interesting for monitoring purposes (Warner and Chmielewski 1992). One solution is to combine a wide range of indicators and measurements of ecosystem processes (eg vegetation, microorganism diversity, chemical and physical markers, and ecosystem level measurements), in order to clarify the relationships between biological, chemical, and physical indicators and the rate at which they change during peatland regeneration.

■ Sensitivity to environmental gradients and global change

Natural ecosystems are increasingly affected by global change, even where no direct impact is noticeable, and indeed peatlands are sensitive to changes in precipitation and atmospheric deposition (Lee 1998; Moore 2002). The potential for mined peatlands to regenerate depends on the characteristics of the leftover surface (eg soil, vegetation), the regional climate (precipitation, pollution) and hydrology, as well as on legal and cultural issues. But anthropogenic influences, such as N deposition rates and increased atmospheric CO₂ concentration, may also affect the outcome of the regeneration process and the

feasibility of rehabilitation, as they do for natural ecosystems (Mitchell *et al.* 2002). To assess the importance of some of these sources of variability, research on peatland regeneration should cover a wide range of climatic and human influences.

■ Conclusions

Despite the potential for a sustainable use of peatlands, some pristine sites need to be preserved in all regions. One of the reasons for this is the conservation of paleoenvironmental records (Buckland 1993; Bourdon *et al.* 2000), since the techniques for environmental reconstruction are constantly changing and we can expect that future scientists will be able to gain much more information from the analysis of peat stratigraphy than we can now (Joosten and Clarke 2002). By revealing the developmental history of peatlands, paleoecologists can also provide crucial information for restoration (Gorham and Rochefort 2003). In addition, preserved peatlands may contribute to ecotourism – they are local illustrations of a unique habitat with a unique biodiversity and natural heritage value. At the same time, limited peatland exploitation supports a certain sector of the rural economy, with other industries dependant upon the peat produced.

If we are to use peatlands in a truly wise way, we need to make sure their exploitation is sustainable, not just globally, but within homogeneous biogeographical regions and within a human timescale. We should preserve both biodiversity and a network of intact sites by carefully planning the uses to which peatlands will be subjected.

■ Acknowledgements

RECIPE is supported by the European Commission, Directorate I, under the "Energy, Environment and Sustainable Development" program (EVK2-2002-00269) and by the Swiss Federal Office for Education and Science (OFES).

■ References

- Barber KE. 1993. Peatlands as scientific archives of biodiversity. *Biodivers Conserv* 2: 474–89.
- Bourdon S, Laggoun-Défarge F, Disnar J-R, *et al.* 2000. Organic matter sources and early diagenetic degradation in a tropical peaty marsh (Tritrivakely, Madagascar): implications for environmental reconstruction during the Sub-Atlantic. *Org Geochem* 31: 421–38.
- Buckland PC. 1993. Peatland archaeology: a conservation resource on the edge of extinction. *Biodivers Conserv* 2: 513–27.
- Bugnon JL, Rochefort L, and Price JS. 1997. Field experiment of *Sphagnum* reintroduction on a dry abandoned peatland in Eastern Canada. *Wetlands* 17: 513–17.
- Buttler AJ, Grosvernier P, and Matthey Y. 1998. Development of *Sphagnum fallax* diaspores on bare peat with implications for the restoration of cut-over bogs. *J Appl Ecol* 35: 800–10.
- Buttler AJ, Warner BG, Grosvernier P, and Matthey Y. 1996. Vertical patterns of testate amoebae (Protozoa: Rhizopoda) and peat-forming vegetation on cutover bogs in the Jura, Switzerland. *New Phytol* 134: 371–82.

- Campeau S and Rochefort L. 1996. Sphagnum regeneration on bare peat surfaces: field and greenhouse experiments. *J Appl Ecol* 33: 599–608.
- Charman DJ. 2001. Biostratigraphic and palaeoenvironmental applications of testate amoebae. *Quaternary Sci Rev* 20: 1753–64.
- Clymo RS, Turunen J, and Tolonen K. 1998. Carbon accumulation in peatland. *Oikos* 81: 368–88.
- Cooper A, McCann TP, and Hamill B. 2001. Vegetation regeneration on blanket mire after mechanized peat-cutting. *Global Ecol Biogeogr* 10: 275–89.
- Craft CB and Richardson CJ. 1998. Recent and long-term organic accretion and nutrient accumulation in the Everglades. *Soil Sci Soc Am J* 62: 834–43.
- Croft M, Rochefort L, and Beauchamp CJ. 2001. Vacuum-extraction of peatlands disturbs bacterial population and microbial biomass carbon. *App Soil Ecol* 18: 1–12.
- Delarze R, Gonseth Y, and Galland P. 1998. Guide des milieux naturels de Suisse: écologie–menaces–espèces caractéristiques. Lausanne, Switzerland: Delachaux et Niestlé.
- Desrochers A, Rochefort L, and Savard JPL. 1998. Avian recolonization of eastern Canadian bogs after peat mining. *Can J Zool* 76: 989–97.
- Desrochers A, Lavoie C, Pellerin S, and Poulin M. 2000. Bog conservation: a Canadian perspective. In: Rochefort L and Daigle JY (Eds). Sustaining our peatlands. Proceedings of the 11th International Peat Congress, Vol 2; August 6–12, 2000; Edmonton, Canada: Canadian Society of Peat and Peatlands & International Peat Society. p 1034–37.
- Egelmark R. 2000. Man and the peat: a Swedish perspective. In: Rochefort L and Daigle JY (Eds). Sustaining our peatlands. Proceedings of the 11th International Peat Congress, Vol 2; August 6–12, 2000; Edmonton, Canada: Canadian Society of Peat and Peatlands & International Peat Society. p 1027–33.
- Feldmeyer-Christe E, Schnyder N, and Bisang I. 2001. Distribution and habitats of peat mosses, *Sphagnum*, in Switzerland. *Lindbergia* 26: 8–22.
- Francez AJ, Gogo S, and Josselin N. 2000. Distribution of potential CO₂ and CH₄ productions, denitrification and microbial biomass C and N in the profile of a restored peatland in Brittany (France). *Eur J Soil Biol* 36: 161–68.
- Francez AJ and Vasander H. 1995. Peat accumulation and peat decomposition after human disturbance in French and Finnish mires. *Acta Oecol* 16: 599–608.
- Gilbert D, Amblard C, Bourdier G, and Francez AJ. 1998. The microbial loop at the surface of a peatland: structure, function, and impact of nutrient input. *Microbial Ecol* 35: 83–93.
- Gibbs JP. 1993. Importance of small wetlands for the persistence of local populations of wetland-associated animals. *Wetlands* 13: 25–31.
- Girard M, Lavoie C, and Theriault M. 2002. The regeneration of a highly disturbed ecosystem: a mined peatland in southern Québec. *Ecosystems* 5: 274–88.
- Gorham E. 1991a. Human influences on the health of northern peatlands. *Trans Roy Soc Can* 6: 199–208.
- Gorham E. 1991b. Northern peatlands: role in the carbon cycle and probable responses to climatic warming. *Ecol Appl* 1: 182–95.
- Gorham E and Rochefort L. 2003. Peatland restoration: a brief assessment with special reference to *Sphagnum* bogs. *Wetlands Ecol Manage* 11: 109–19.
- Grosvernier P, Matthey Y, and Buttler AJ. 1995. Microclimate and physical properties of peat: new clues to the understanding of bog restoration processes. In: Robertson RA (Ed). Restoration of temperate wetlands. Chichester, UK: John Wiley & Sons. p 437–50.
- Halsey LA, Vitt DH, and Bauer IE. 1998. Peatland initiation during the Holocene in continental western Canada. *Climatic Change* 40: 315–342.
- Halsey LA, Vitt DH, and Gignac LD. 2000. *Sphagnum*-dominated peatlands in North America since the last glacial maximum: their occurrence and extent. *Bryologist* 103: 334–52.
- Heikkilä R and Lindholm T. 2000. Conservation of the biodiversity of mires in Finland. In: Rochefort L and Daigle JY (Eds). In: Rochefort L and Daigle JY (Eds). Sustaining our peatlands. Proceedings of the 11th International Peat Congress, Vol 2; August 6–12, 2000; Edmonton, Canada: Canadian Society of Peat and Peatlands & International Peat Society. p 1038–43.
- Joosten H and Clarke D. 2002. The wise use of mires and peatlands. International Mire Conservation Group and International Peat Society.
- Kasimir-Klemedtsson A, Klemedtsson L, Berglund K, et al. 1997. Greenhouse gas emissions from farmed organic soils: a review. *Soil Use Manage* 13: 245–50.
- Lappalainen E. 1996. Global peat resources. Jyskä, Finland: International Peat Society.
- Lee JA. 1998. Unintentional experiments with terrestrial ecosystems: ecological effects of sulfur and nitrogen pollutants. *J Ecol* 86: 1–12.
- Lindsay RA. 1993. Peatland conservation – from cinders to Cinderella. *Biodivers Conserv* 2: 528–40.
- Matthey Y. 1996. Conditions écologiques de la régénération spontanée du *Sphagnion magellanici* dans le Jura Suisse (typologie, pédologie, hydrodynamique et micro-météorologie) (PhD thesis). Neuchâtel, Switzerland: University of Neuchâtel.
- Mazerolle MJ, Drolet B, and Desrochers A. 2001. Small mammal responses to peat mining of southeastern Canadian bogs. *Can J Zool* 79: 296–302.
- Mitchell EAD, Buttler AJ, Warner BG, and Gobat JM. 1999. Ecology of testate amoebae (Protozoa: Rhizopoda) in *Sphagnum* peatlands in the Jura mountains, Switzerland and France. *Ecoscience* 6: 565–76.
- Mitchell EAD, Buttler AJ, Grosvernier P, et al. 2000. Relationships among testate amoebae (Protozoa), vegetation and water chemistry in five *Sphagnum*-dominated peatlands in Europe. *New Phytol* 145: 95–106.
- Mitchell EAD, Buttler AJ, Grosvernier P, et al. 2002. Contrasted effects of increased N and CO₂ supply on two keystone species in peatland restoration and implications for global change. *J Ecol* 90: 529–33.
- Mitsch WJ and Gosselink JG. 2000. Wetlands, 3rd ed. New York: John Wiley & Sons.
- Moore PD. 2002. The future of cool temperate bogs. *Environ Conserv* 29: 3–20.
- Price JS and Whitehead GS. 2001. Developing hydrologic thresholds for *Sphagnum* recolonization on an abandoned cutover bog. *Wetlands* 21: 32–40.
- Price JS, Rochefort L, and Campeau S. 2002. Use of shallow basins to restore cutover peatlands: hydrology. *Restor Ecol* 10: 259–66.
- Robert EC, Rochefort L, and Garneau M. 1999. Natural revegetation of two block-cut mined peatlands in eastern Canada. *Can J Bot* 77: 447–59.
- Rochefort L. 2000. New frontiers in bryology and lichenology. *Sphagnum* – a keystone genus in habitat restoration. *Bryologist* 103: 503–08.
- Rochefort L and Bastien DF. 1998. Reintroduction of *Sphagnum* into harvested peatlands: evaluation of various methods for protection against desiccation. *Ecoscience* 5: 117–27.
- Schilstra AJ. 2001. How sustainable is the use of peat for commercial energy production? *Ecol Econ* 39: 285–93.
- Soro A, Sundberg S, and Rydin H. 1999. Species diversity, niche metrics and species associations in harvested and undisturbed bogs. *J Veg Sci* 10: 549–60.
- Warner BG and Chmielewski JG. 1992. Testate amoebae (Protozoa) as indicators of drainage in a forested mire, northern Ontario, Canada. *Arch Protistenkd* 141: 179–83.