

Carbon balance of a cutover bog in the Jura mountains at different stages of regeneration

Estelle Bortoluzzi^{1,2} and Steve Chapman³

1 University of Nantes, France
2 University of Franche-Comté, France
3 Macaulay Institute, Aberdeen, Scotland



Peatlands : carbon sinks



A considerable stake in the actual context : as illustrated by these extracts of the Kyoto Protocol (1992) :

Article 7

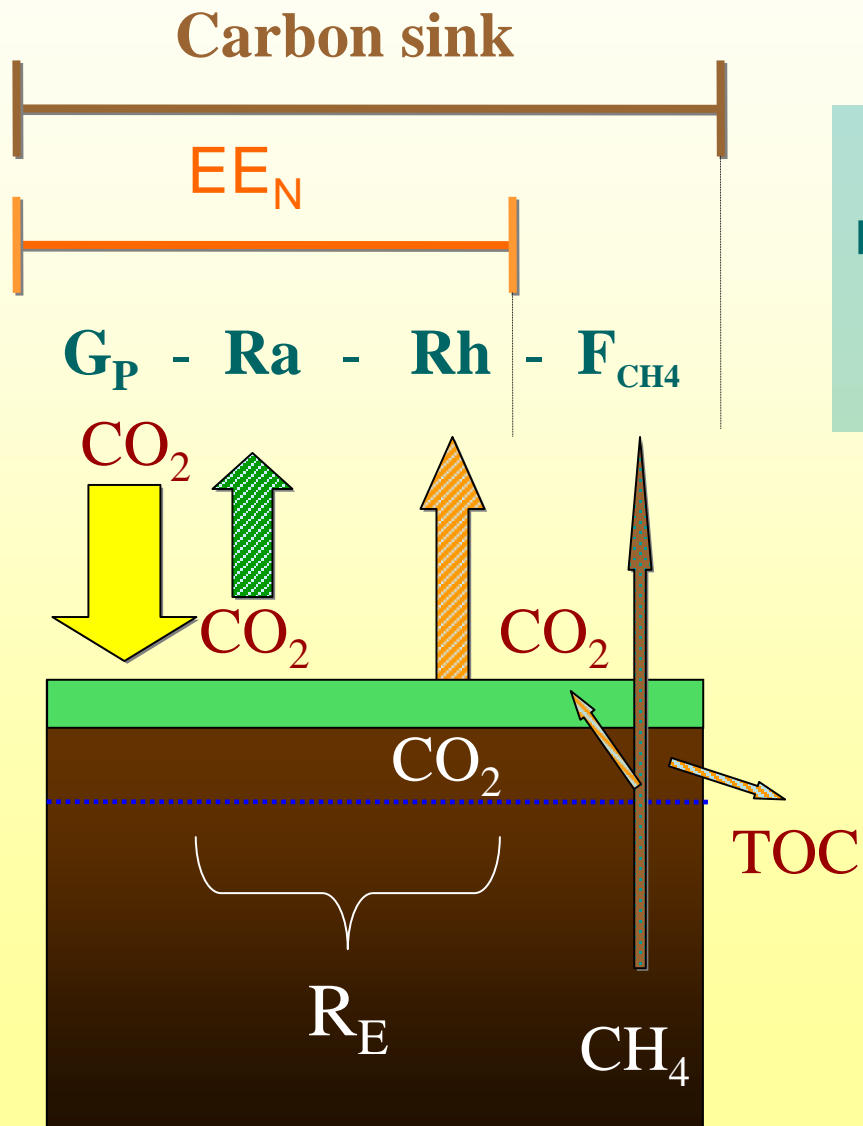
"1. Each Party (...) shall incorporate in its annual inventory of anthropogenic emissions by sources and removals by sinks of greenhouse gases (...)"

Article 10b

(ii) "Parties (...) contribute to addressing climate change and its adverse impacts, including the abatement of increases in greenhouse gas emissions, and enhancement of and removals by sinks (...)"



After exploitation, carbon sink ?



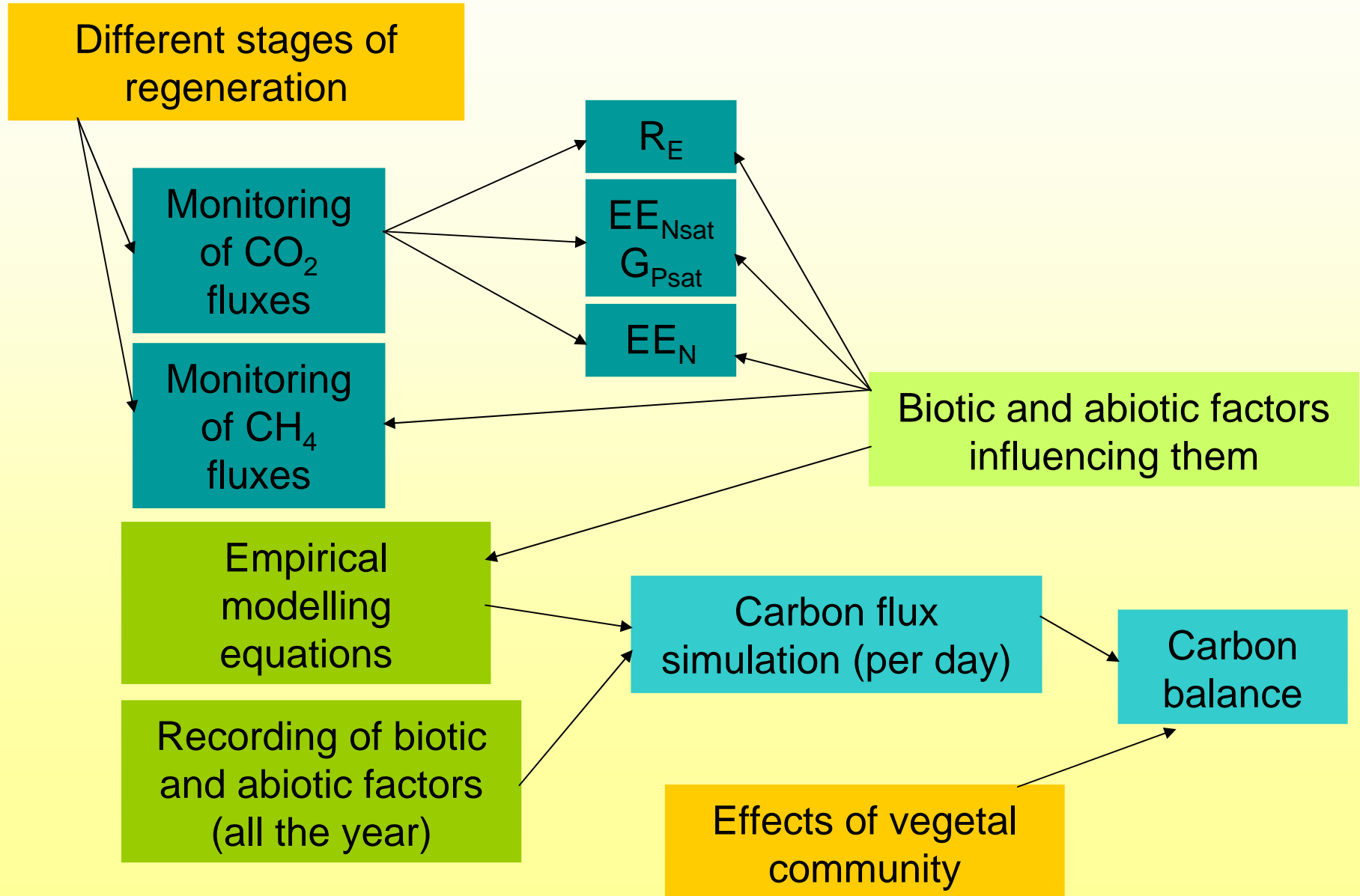
At which time in the regeneration process does the peatland again become a carbon sink?


This is one of the problematic issues of the European project RECIPE.

Objectives :

- The role of the key vegetation communities in the re-establishment of a carbon sink.
- The compartmentation of carbon fluxes.
- The building of an empirical model in order to establish a carbon balance for different stages of regeneration.

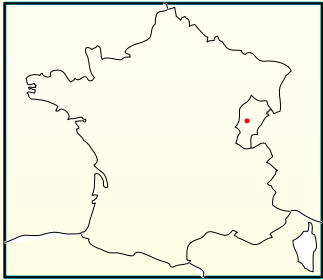
Objectives :



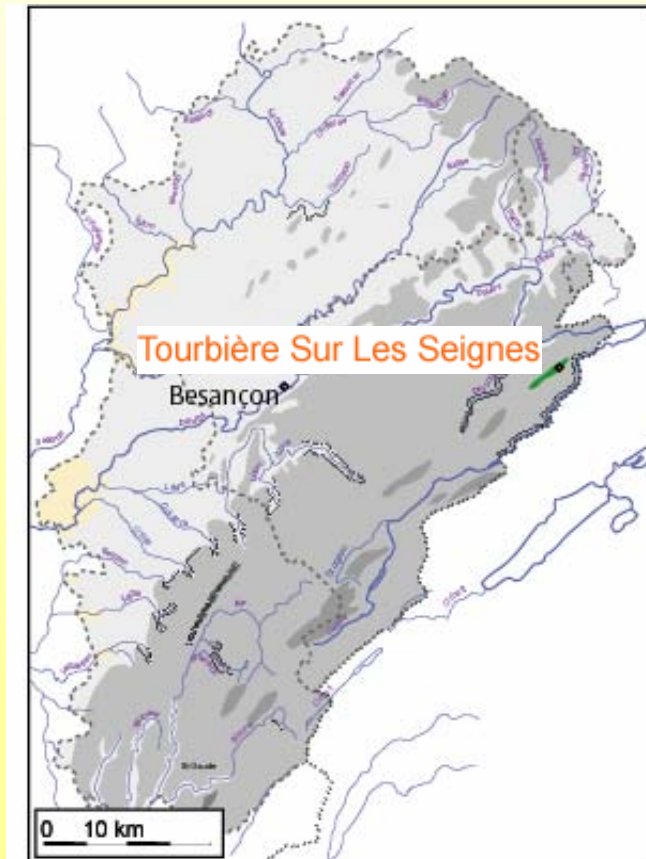


Materials
and
methods

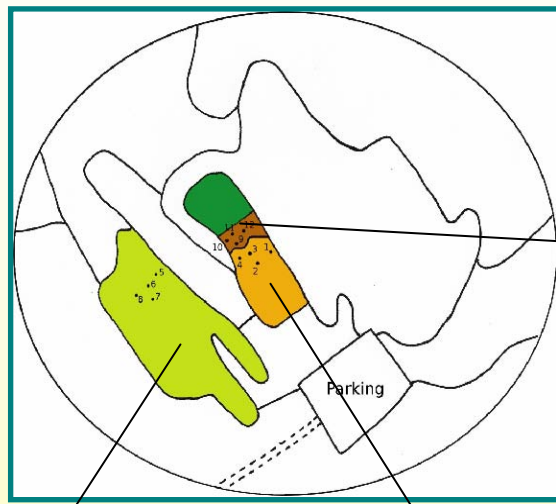
Studied site



- A bog in the Jura mountains (860m), exploited for horticulture since 1984, visited yesterday.
- Different stages of regeneration.



The monitored stations



Bare peat



Advanced regeneration



Recent regeneration

Measurements of CO₂ fluxes

Survey during 2 years (except with snow cover) :

- 11 collars dispatched on the 3 regeneration stages.
- Measurements made with an IRGA (CIRAS 1, ppsystems, U.K.) and an open chamber.



E. Bortoluzzi



E. Bortoluzzi

For EE_{Nsat} and R_E

- Campaign 2004 : once per week (26 days of data acquisition).
- Campaign 2005 : once per three weeks (8 days of data acquisition).

For EE_N without light saturation

- Measurements with artificial shading.

Abiotic and biotic factors

Following during the fluxes measurements :

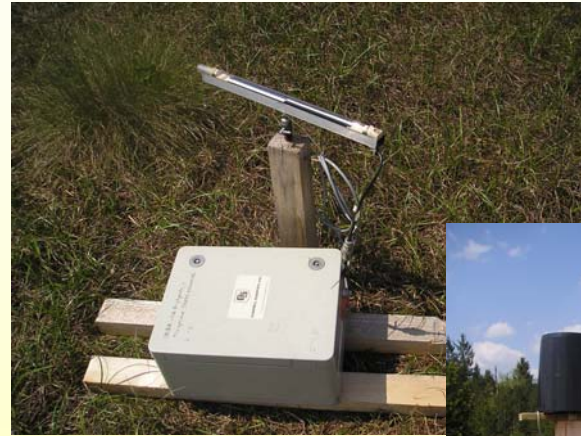
- Air temperature and PPFD.
- Temperature at 5, 10 and 50 cm.
- Water table level.

Data acquisition during all the year
(time step = $\frac{1}{2}$ h) :

- Global radiation.
- Air temperature.
- Peat temperature at 5 and 30 cm.

Vegetation index (VI) (between 0 to 1) built with :

- Foliar Index (IF) for vascular plants.
- Bryophyte index (BI).
- Visual index of bryophyte dessication (DI).



E. Bortoluzzi

Methane fluxes

- CH₄ fluxes followed during the two years at each season.
- Incubation in closed and dark chambers.
- Three samples over 75 min in vacuum tubes (analysed with a micro-GC).





Results
And
discussion

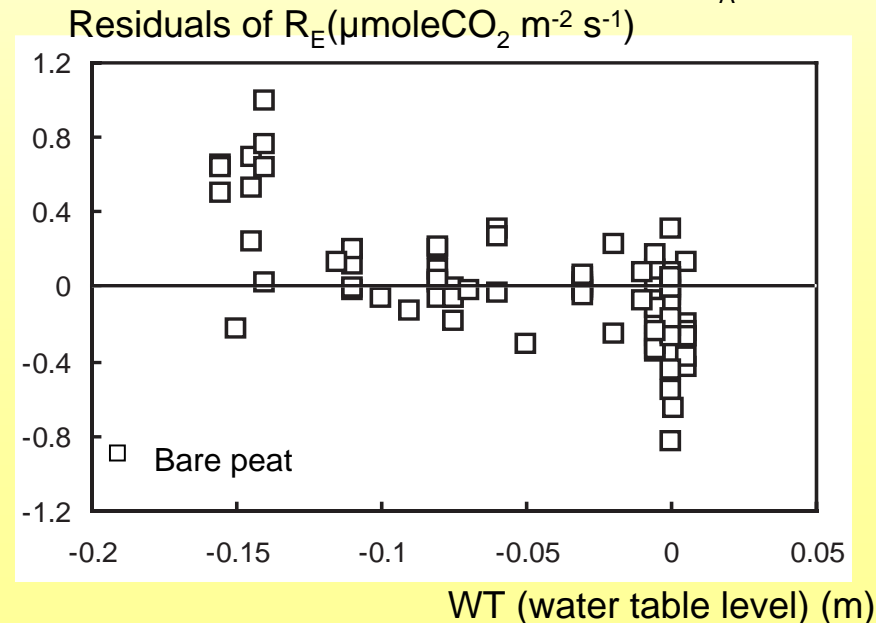
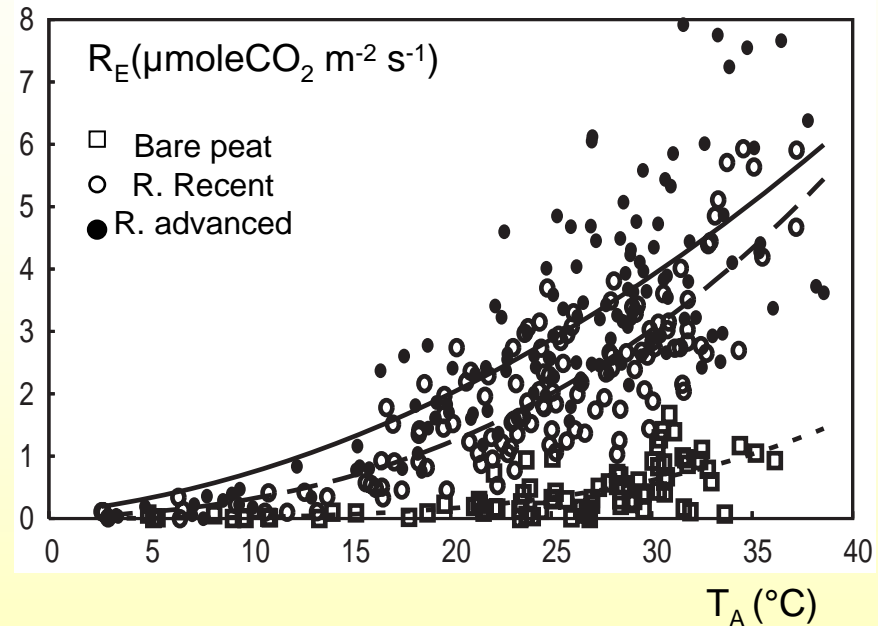
Key factors of R_E

- R_E function of temperature.
- Best answer with :
 - *Air temperature*
 - *Power function*

$$R_E = \alpha * \left(\frac{(T_A - T_{\min})}{(T_{\text{r}\acute{e}\text{f}} - T_{\min})} \right)^b$$

- On bare peat :
 - Residuals linked with the water table level.

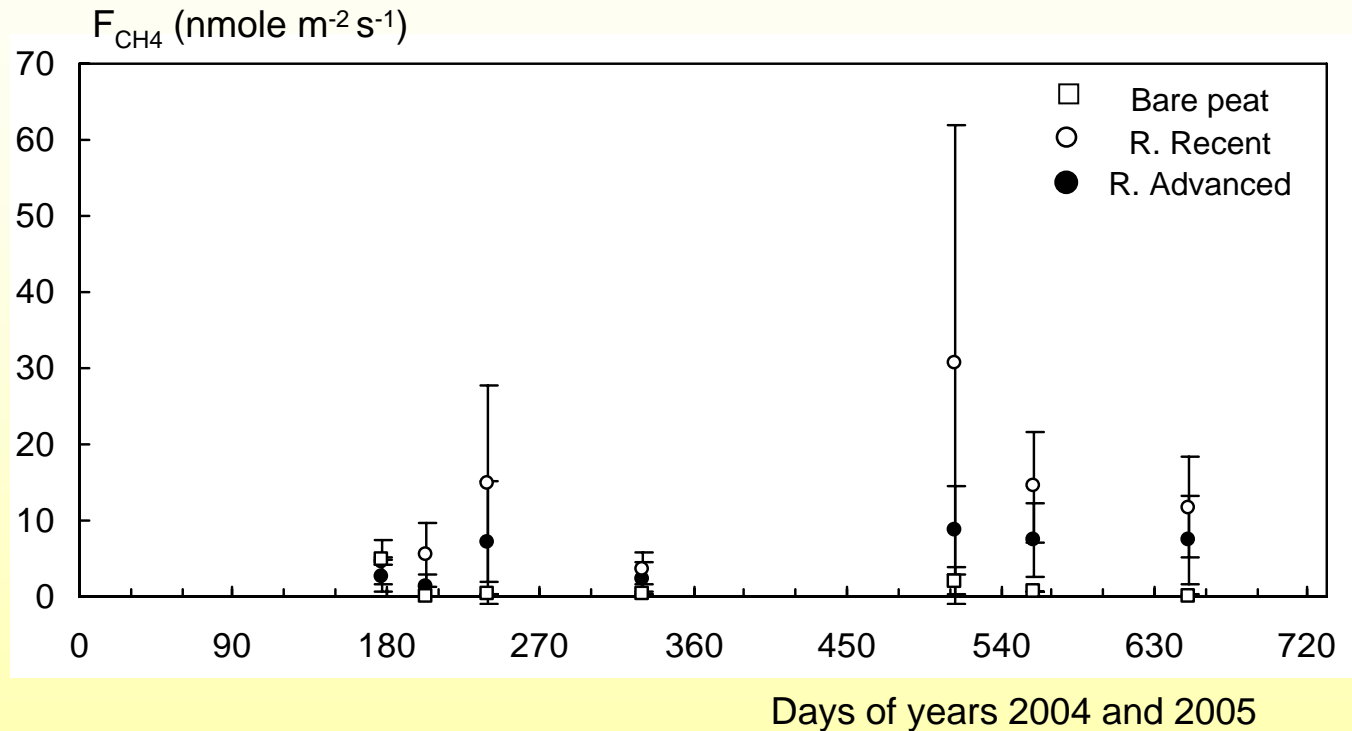
$$R_E = \left(a * \frac{WT}{WT_{\text{r}\acute{e}\text{f}}} + c \right) * \left(\frac{(T_A - T_{\min})}{(T_{\text{r}\acute{e}\text{f}} - T_{\min})} \right)^b$$



CO₂ fluxes discussion

- **Respiration**
- Air temperature :
 - First factor which explains R_E variations (Lafleur *et al.* 2005).
- Water table level :
 - Bare peat with high water table level : low CO₂ fluxes.
- Vegetation index :
 - High contribution to respiration.
- **Growth photosynthesis and Net Ecosystem Exchange**
- Bryophyte desiccation : key factor for P_{Gsat}
- Vegetation index : takes into account both types of vegetation
 - ⇒ *Good simulation*
 - *at the site*
 - *at the intra-site micro-heterogeneity*
 - *at the variations between the two years of measurements.*

Methane fluxes



-Low fluxes.

-The highest fluxes in the recent regeneration.

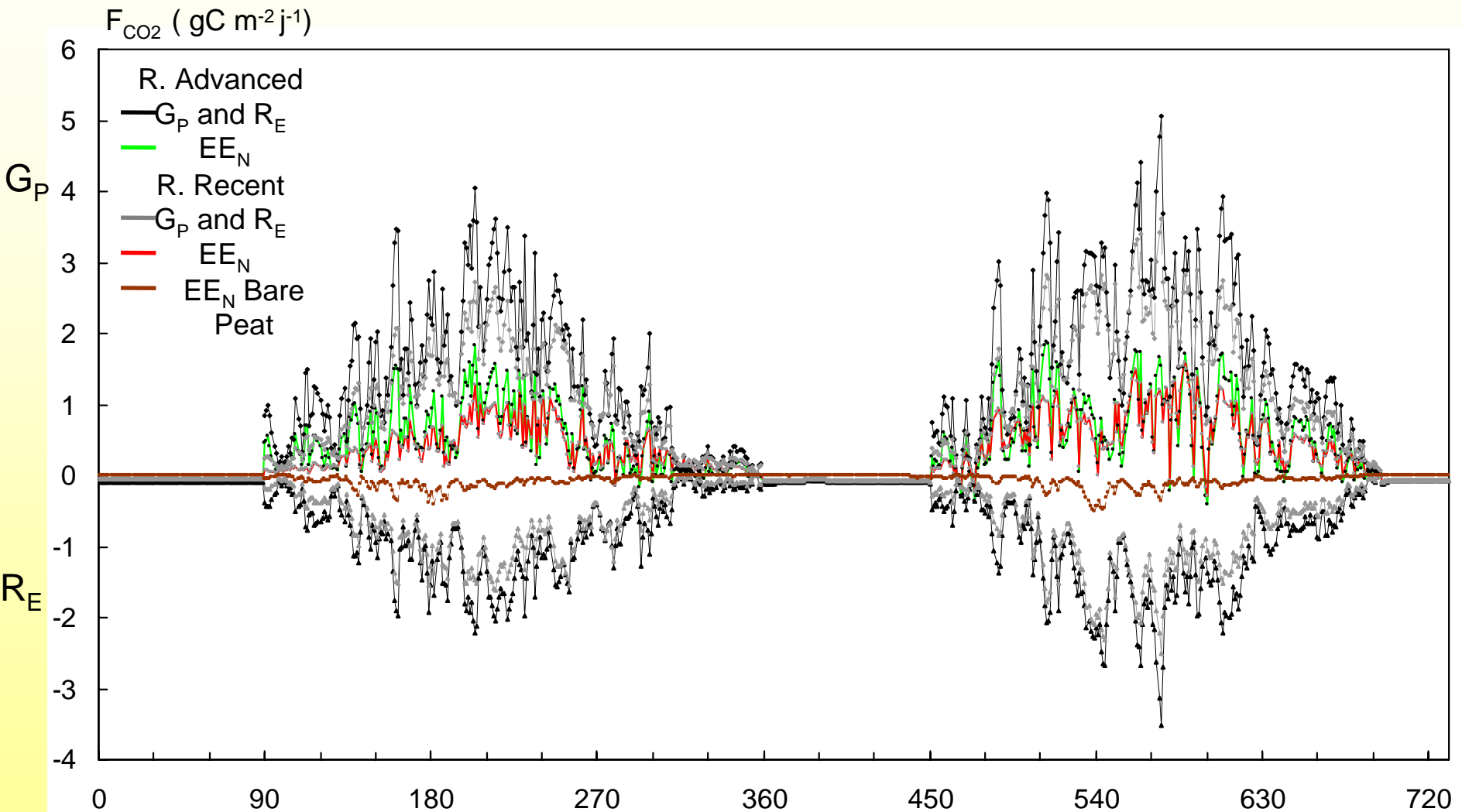
-The lowest fluxes on bare peat.

- High intra-site variability.

Methane fluxes : discussion

- CH₄ fluxes linked to foliar index, two possible types of interactions :
 - *Methane ducting*
 - *Organic carbon availability* (Mikkela et al. 1995).
- Highly decomposed peat, low CH₄ (Glatzel et al. 2004).
- CH₄ fluxes and water table level :
 - *Concomitant augmentation of temperature.*
- Comparison with the data of dissolved CH₄ and CO₂ along the peat profile (followed during the two years) :
 - ⇒ Additional information on the surface fluxes.

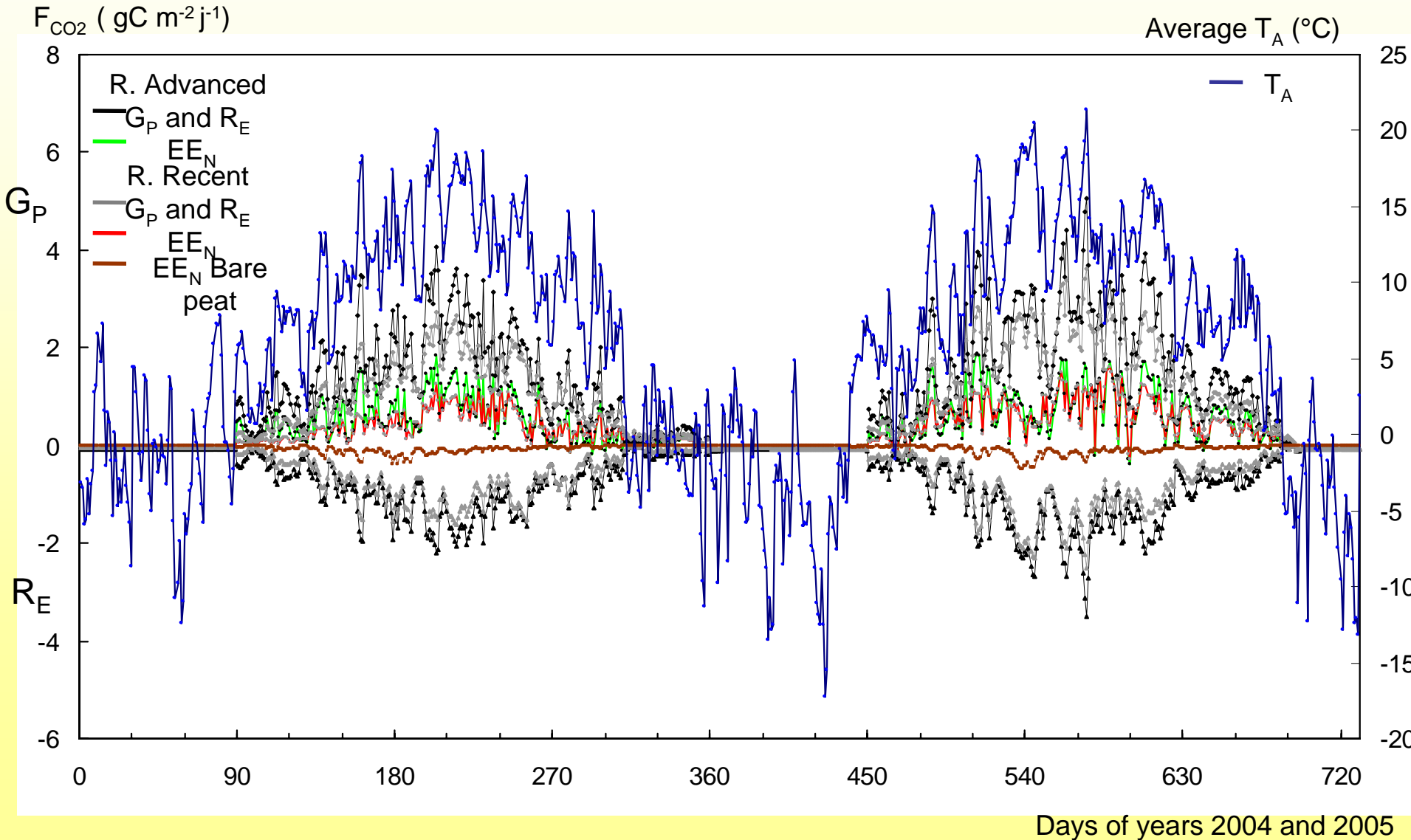
Daily fluxes simulated



Days of years 2004 and 2005

Daily fluxes simulated

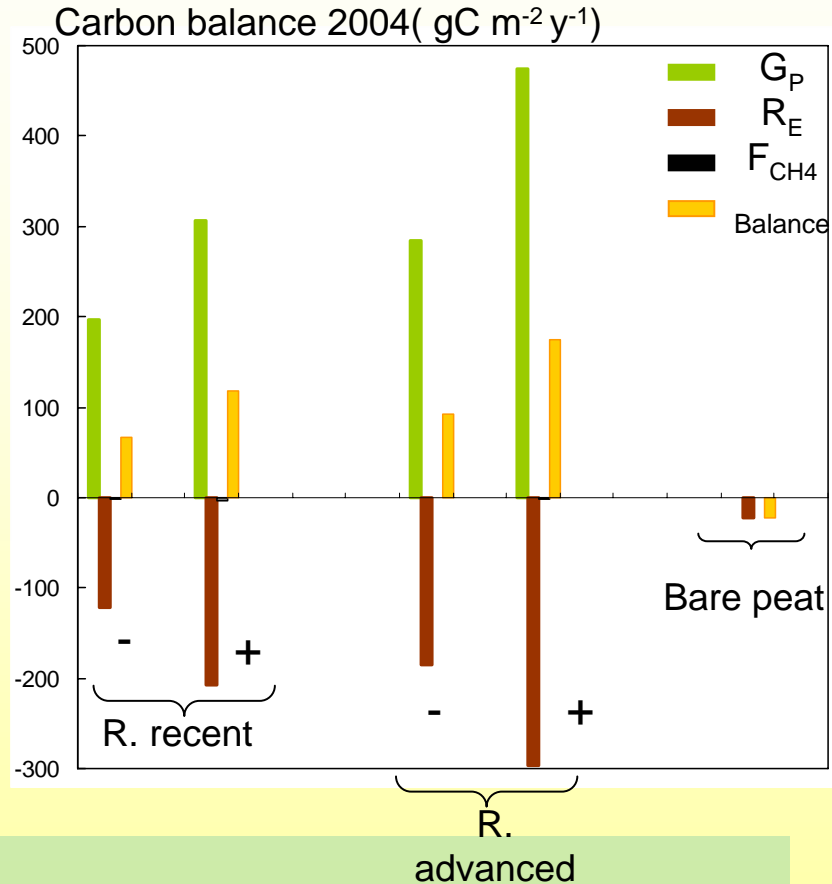
Effects of air temperature daily variations



Carbon balance

Annual estimated carbon balance compartments
(g C m⁻² y⁻¹)

2004	Bare peat	R. recent	R. advanced
G _P		197 ~ 306	284 ~ 474
R _E	-22	-121 ~ -207	-186 ~ -297
F _{CH4}	-0.4	-1.5 ~ -2.8	-0.7 ~ -2.3
balance	-22	67 ~ 118	93 ~ 175
2005	Bare peat	R. recent	R. advanced
G _P		279 ~ 379	359 ~ 525
R _E	-19 ~ -31	-199 ~ -214	-233 ~ -340
F _{CH4}	-0.2 ~ -0.6	-1.8 ~ -3.9	-0.5 ~ -2.7
balance	-19 ~ -32	78 ~ 166	122 ~ 183



The two stages in regeneration :

Carbon sink for both years, higher in the R. advanced.

Bare peat :

Weak carbon source.



Conclusion
and
perspectives

Vegetation and carbon fluxes

Two distinct stages of regeneration :

R. advanced, dominated by Sphagnum :

- *Carbon sink slightly more elevated.*
- *Drought impact.*

R. recent, dominated by vascular plants :

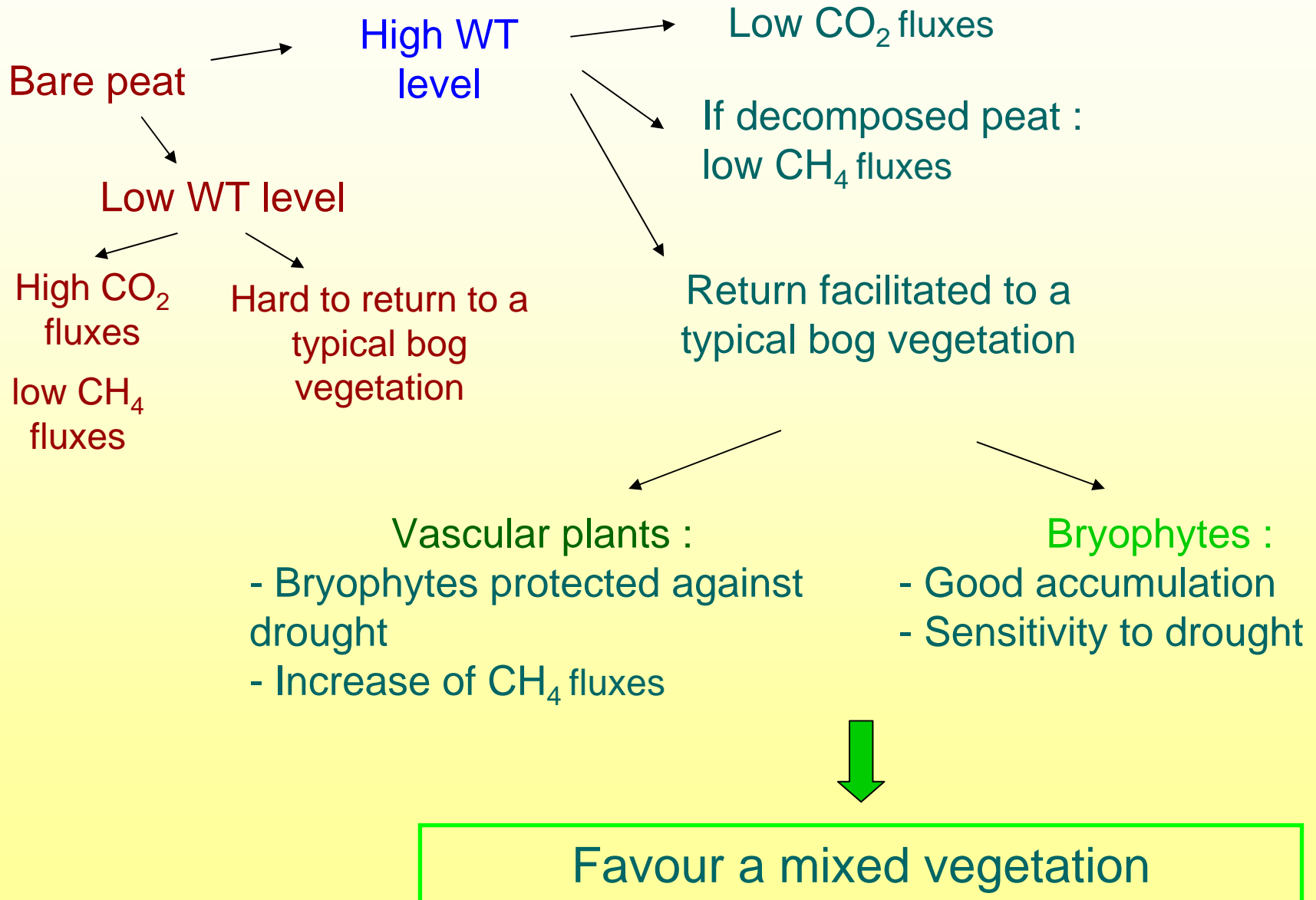
- *Weaker drought impact.*
- *More methane released.*

Closed balance between those stages but different processes :

⇒ Several possible evolutions in the case of climate change.

⇒ A composite vegetation better adapted to the climate change in term of carbon balance.

Bog Restoration and carbon balance



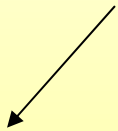
A better comprehension of physiological processes of the different key vegetal species and of microorganisms



Starting up of more mechanistic models



Scenario testing of climate changes or of restoration



Molecular and microscopic approaches of material degradation processes (RECIPE).



Isotopic measurements per key vegetal species and for different peat types.



Measurements of CO₂ fluxes at leaf or *Sphagnum* plant scale.



Evaluation of C loss through DOC and VOC.



Merci,

pour votre attention,

à l'équipe du programme RECI PE,

à l'équipe du Laboratoire de Chrono-Ecologie,

au Laboratoire de Biologie Environnementale,

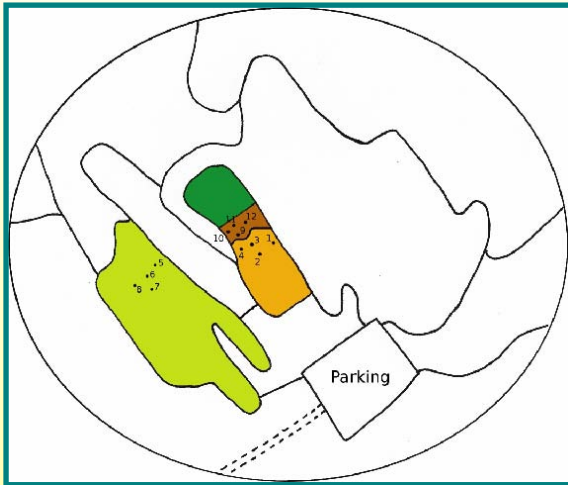
Daniel Epron, Andy Siegenthaler, Daniel Gilbert

et Alexandre Buttler.

Studied vegetation stages



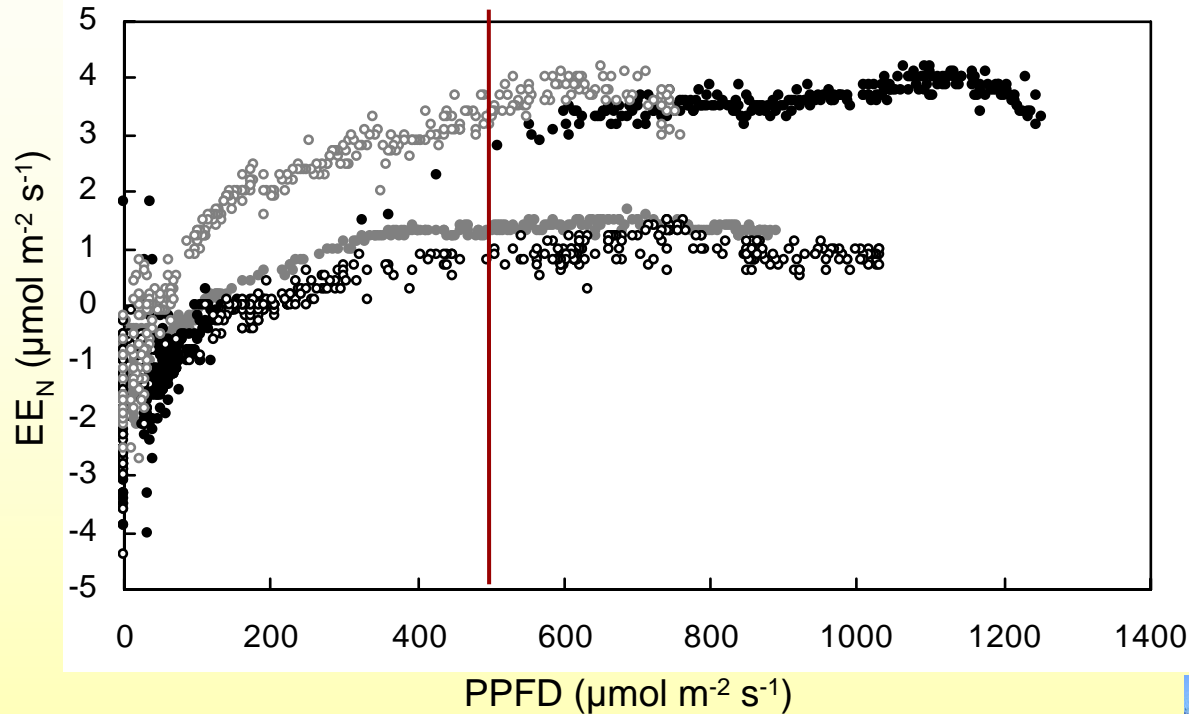
- Bare peat (brown) : without vegetation,
Water table level near the surface all the year.



- Recent regeneration (orange) :
Majority of *Eriophorum angustifolium* and
installation under them of *Sphagnum fallax*,
S. rubellum and *S. magellanicum* and
Polytrichum strictum.

- advanced regeneration (pale green) :
 - *Eriophorum vaginatum* and *Sphagnum fallax*, *S. rubellum* and *S. magellanicum* and *Polytrichum strictum*.
 - Four times more bryophytes and less vascular plants than on the recent regeneration.

Measurements of CO₂ fluxes without light saturation



Threshold of light saturation at $500 \mu\text{mol m}^{-2} \text{s}^{-1}$.

The method keeping artificial shading:

- Four levels of shading obtained under the threshold of saturation (between 400 to 70 $\mu\text{mol m}^{-2} \text{s}^{-1}$).



Abiotic factors

Monitoring during the fluxes measurements :

- Air temperature and PPFD.
- Temperature at 5, 10 and 50 cm.
- Water table level.



E. Bortoluzzi



E. Bortoluzzi

Data acquisition during all the year (time step = $\frac{1}{2}$ h) :

- Global radiation.
- Air temperature.
- Peat temperature at 5 and 30 cm.

Biotic factors

- Foliar Index (IF) for vascular plants :
 - *Length of marked leaves* \Rightarrow *surface average.*
 - *Number of leaves per collar.*
- Bryophytes index (BI) :
 - Surface covered and density.
- Visual index of bryophytes dessication (DI):
 - From 1 (completely dessicated) to 6 (flooded).
- Vegetation index (VI) (between 0 to 1) :

$$VI = \frac{\left(IF + BI * \left(\frac{DI}{DI_{max}} \right) \right)}{(IF_{max} + BI_{max})}$$

Empirical model

Empirical model : bare peat site

$$EE_N = \left(a * \frac{WT}{WT_{ref}} + c \right) * \left(\frac{(T_A - T_{min})}{(T_{ref} - T_{min})} \right)^b$$

$$F_{CH_4} = j * WT$$

Empirical model ; sites with vegetation

$$EE_N = \left(\frac{i * PPF D * f * VI * e^{-\left(\frac{T_A - g}{h}\right)^2}}{f * VI * e^{-\left(\frac{T_A - g}{h}\right)^2} + i * PPF D} \right) - \left[\left(d * \frac{WT}{WT_{ref}} \right) + (e * VI) \right] * \left(\frac{(T_A - T_{min})}{(T_{ref} - T_{min})} \right)^b$$

$$F_{CH_4} = k * IF$$