

PhD Candidate: Heather Smith, Macaulay Institute, Craigiebuckler, Aberdeen • h.smith@macaulay.ac.uk • project duration: 2007-2010
PhD Supervisors: Kirsty Blackstock, Macaulay Institute; Gill Wall, University of Aberdeen; Alister Scott, University of Waikato

RESEARCH CONTEXT

Achieving the objectives of the EU Water Framework Directive (2000) will require greater integration between water management and land use planning systems. In many States this involves building collaborative ties between two disparate policy regimes with distinct approaches and cultures of practice. In Scotland there is added complexity as the national River Basin Management Plan (required by the WFD) is being prepared amid significant reforms to land use planning. The relationship between the two regimes is unclear, and as yet there is little guidance or research on how to achieve greater integration.



RESEARCH AIMS

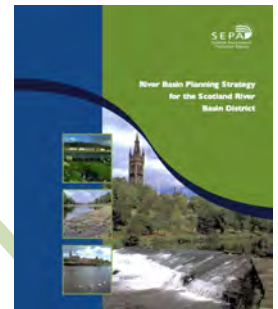
- 1) To help inform the emerging relationship between river basin management and land use planning in Scotland; and
- 2) To help determine the practical meanings of theoretical ideas of integration and collaborative management.



DRIVERS OF CHANGE

There are a number of emerging (and related) ideas that pervade contemporary debates in both water management and land use planning including:

- Sustainable development*
- Integrated decision-making*
- Collaboration and partnership building*
- "Implementation gap" between theory, policy and practice*



TRENDS IN LAND USE PLANNING

Modernisation

Building efficiency and transparency in public service delivery

Rural Development

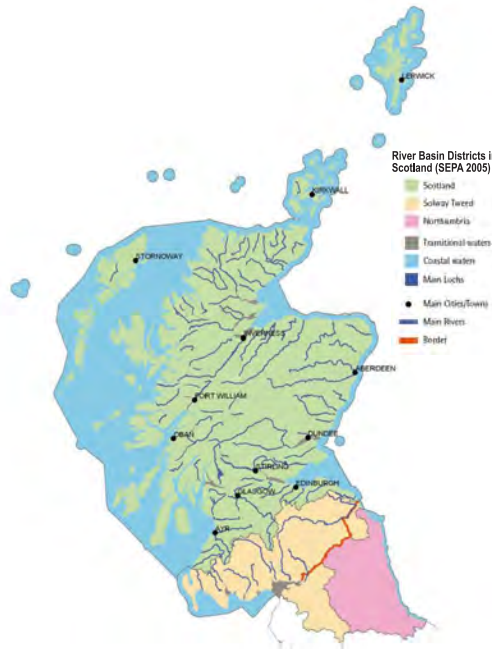
Moving from agriculture-centred policy to integrated rural policy

Collaborative Planning

Planning through dialogue and negotiation

Spatial Planning

A strategic approach that encompasses environmental, social and economic objectives



TRENDS IN WATER MANAGEMENT

River Basin Planning

Coordinating water uses at the basin level

Ecological Management

Moving to a holistic, integrated understanding of ecological systems

Collaborative Management

Developing partnerships through negotiation and communication

Integrated Water Resource Management

A strategic approach that encompasses environmental, social and economic objectives

KEY QUESTIONS

The trends described above all influence the interaction between the WFD and land use planning. As policies and plans are developed, new relationships are emerging between the two fields. Yet there are different expectations as to what form these relationships should take.

This project will focus on how the planning system is responding to the new requirements, by examining the following key questions:

- What do planners perceive should be the role of the planning system in delivering the objectives of the WFD and RBMP?
- What do they perceive is needed in order to achieve that role?
- How are these perceptions manifesting in new planning policy and instruments?

